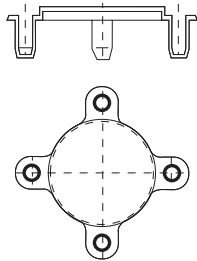


# SNAP-IN FLANGE PROTECTORS

## FC SERIES

Widely viewed as the industry standard for flange protection, this cover requires no additional fastening devices. Simply snap the protector plugs into the flange bolt holes and apply minimal pressure. These flange protectors were engineered for quick and easy installation. The FC Series is resistant to petroleum residues.



**Material:** Low-Density Polyethylene **Color\*:** Blue - 150 lb. series Black - 300 lb. series

Caplug No.	Dimensions	Carton Weight		Packaging	
	Nominal Size (In)	lbs	kgs	Carton Quantity	Mini Pak Quantity

Used on 125 & 150 lb.

FC-150-0500	1/2	34	15.4	800	160
FC-150-0750	3/4	26	11.8	800	160
FC-150-1	1	45	20.4	600	120
FC-150-1500	1-1/2	32	14.5	400	80
FC-150-2	2	15	6.8	200	40
FC-150-3	3	13	5.9	100	20
FC-150-4	4	17	7.7	100	20
FC-150-6	6	23	10.4	90	18
FC-150-8	8	49	22.2	100	20
FC-150-10	10	46	20.9	60	12
FC-150-12	12	48	21.8	40	8

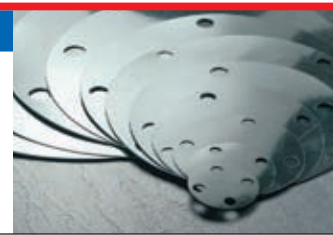
Caplug No.	Dimensions	Carton Weight		Packaging	
	Nominal Size (In)	lbs	kgs	Carton Quantity	Mini Pak Quantity

Used on 300, 400 & 600 lb.

FC-300-0500	1/2	25	11.3	800	160
FC-300-0750	3/4	21	9.5	500	100
FC-300-1	1	16	7.3	400	80
FC-300-1500	1-1/2	20	9.1	250	50
FC-300-2	2	15	6.8	150	30
FC-300-3	3	15	6.8	100	20
FC-300-4 †	4	15	6.8	80	16
FC-300-6 †	6	28	12.7	100	20
FC-300-8 †	8	38	17.2	100	20
FC-300-10 †	10	36	16.3	60	12
FC-300-12 †	12	83	37.6	30	6

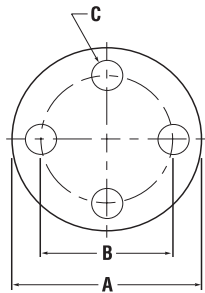
†Will fit 300 lb. flanges only.

**COVERS WITH BOLT HOLES** *FAN Series*



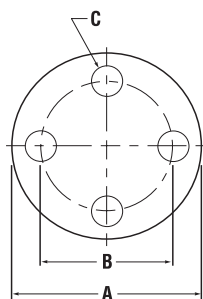
Used to cover the full face of flange and protect the sealing surface. These flange covers are secured with plugs through the four equally spaced bolt holes. Our line of FAN plugs were engineered to provide a secure fit while remaining ergonomically conscious for ease of installation and removal. These covers can also be secured to the flange with our line of cable ties (CAB Series). Additional shapes and sizes of these flange covers are available. Sizes are in accordance with ANSI B-16.5 and ANSI B-16.47.

**Material:** High-Density Polyethylene **Color\*:** Black



All standard die-cut flange covers are 1/16" thick. Alternate materials and thicknesses are available.

Caplug No.	Nom Pipe Size	Dimensions						Min Sales Quantity	Fasteners	
		A		B		C			Matching Bolt Hole Plug	Cable Tie
		In	mm	In	mm	In	mm			
<b>150 Class Pressure Rating</b>										
FAN-150-1/2	1/2	3.50	88.90	2.38	60.45	.68	17.32	150	FBH-625	CAB-B7SOM
FAN-150-3/4	3/4	3.88	98.55	2.75	69.85	.68	17.32	150	FBH-625	CAB-B7SOM
FAN-150-1	1	4.25	107.95	3.12	79.25	.68	17.32	100	FBH-625	CAB-B7SOM
FAN-150-1-1/4	1-1/4	4.62	117.35	3.50	88.90	.68	17.32	100	FBH-625	CAB-B7SOM
FAN-150-1-1/2	1-1/2	5.00	127.00	3.88	98.55	.68	17.32	100	FBH-625	CAB-B7SOM
FAN-150-2	2	6.00	152.40	4.75	120.65	.68	17.32	75	FBH-625	CAB-B7SOM
FAN-150-2-1/2	2-1/2	7.00	177.80	5.50	139.70	.81	20.62	50	FBH-750	CAB-B11SOM
FAN-150-3	3	7.50	190.50	6.00	152.40	.81	20.62	50	FBH-750	CAB-B11SOM
FAN-150-3-1/2	3-1/2	8.50	215.90	7.00	177.80	.81	20.62	50	FBH-750	CAB-B11SOM
FAN-150-4	4	9.00	228.60	7.50	190.50	.81	20.62	40	FBH-750	CAB-B11SOM
FAN-150-5	5	10.00	254.00	8.50	215.90	.94	23.93	35	FBH-875	CAB-B11SOM
FAN-150-6	6	11.00	279.40	9.50	241.30	.94	23.93	25	FBH-875	CAB-B11SOM
FAN-150-8	8	13.50	342.90	11.75	298.45	.94	23.93	20	FBH-875	CAB-B11SOM
FAN-150-10	10	16.00	406.40	14.25	361.95	1.06	26.97	15	FBH-1000	CAB-B11SOM
FAN-150-12	12	19.00	482.60	17.00	431.80	1.06	26.97	10	FBH-1000	CAB-B11SOM
FAN-150-14	14	21.00	533.40	18.75	476.25	1.18	30.02	10	FBH-1125	CAB-B11SOM
FAN-150-16	16	23.50	596.90	21.25	539.75	1.18	30.02	5	FBH-1125	CAB-B11SOM
FAN-150-18	18	25.00	635.00	22.75	577.85	1.31	33.32	5	FBH-1250	CAB-B11SOM
FAN-150-20	20	27.50	698.50	25.00	635.00	1.31	33.32	5	FBH-1250	CAB-B11SOM
FAN-150-22	22	29.50	749.30	27.25	692.15	1.44	36.63	5	FBH-1375	CAB-B11SOM
FAN-150-24	24	32.00	812.80	29.50	749.30	1.44	36.63	4	FBH-1375	CAB-B14SOM
FAN-150-26A	26	34.25	869.95	31.75	806.45	1.44	36.63	4	FBH-1375	CAB-B14SOM
FAN-150-26B	26	30.94	785.88	29.31	744.47	.94	23.93	4	FBH-875	CAB-B11SOM
FAN-150-28A	28	36.50	927.10	34.00	863.60	1.44	36.63	2	FBH-1375	CAB-B14SOM
FAN-150-28B	28	32.94	836.68	31.31	795.27	.94	23.93	2	FBH-875	CAB-B11SOM
FAN-150-30A	30	38.75	984.25	36.00	914.40	1.44	36.63	2	FBH-1375	CAB-B14SOM
FAN-150-30B	30	34.94	887.48	33.31	846.07	.94	23.93	2	FBH-875	CAB-B11SOM
FAN-150-32A	32	41.75	1060.45	38.50	977.90	1.68	42.72	2	FBH-1625	CAB-B17SOC
FAN-150-32B	32	37.06	941.32	35.44	900.18	.94	23.93	2	FBH-875	CAB-B11SOM
FAN-150-34A	34	43.75	1111.25	40.50	1028.70	1.68	42.72	2	FBH-1625	CAB-B17SOC
FAN-150-34B	34	39.56	1004.82	37.69	957.33	1.06	26.97	2	FBH-1000	CAB-B11SOM
FAN-150-36A	36	46.00	1168.40	42.75	1085.85	1.68	42.72	2	FBH-1625	CAB-B17SOC
FAN-150-36B	36	41.62	1057.15	39.75	1009.65	1.06	26.97	2	FBH-1000	CAB-B11SOM
FAN-150-38A	38	48.75	1238.25	45.25	1149.35	1.68	42.72	2	FBH-1625	CAB-B17SOC
FAN-150-38B	38	44.25	1123.95	42.12	1069.85	1.18	30.02	2	FBH-1125	CAB-B14SOM
FAN-150-40A	40	50.75	1289.05	47.25	1200.15	1.68	42.72	2	FBH-1625	CAB-B17SOC
FAN-150-40B	40	46.25	1174.75	44.12	1120.65	1.18	30.02	2	FBH-1125	CAB-B14SOM
FAN-150-42A	42	53.00	1346.20	49.50	1257.30	1.68	42.72	2	FBH-1625	CAB-B17SOC
FAN-150-42B	42	48.25	1225.55	46.12	1171.45	1.18	30.02	2	FBH-1125	CAB-B14SOM
FAN-150-44A	44	55.25	1403.35	51.75	1314.45	1.68	42.72	2	FBH-1625	CAB-B17SOC
FAN-150-44B	44	50.25	1276.35	48.12	1222.25	1.18	30.02	2	FBH-1125	CAB-B14SOM
FAN-150-46A	46	57.25	1454.15	53.75	1365.25	1.68	42.72	2	FBH-1625	CAB-B17SOC
FAN-150-46B	46	52.81	1341.37	50.56	1284.22	1.31	33.32	2	FBH-1250	CAB-B14SOM
FAN-150-48A	48	59.50	1511.30	56.00	1422.40	1.68	42.72	2	FBH-1625	CAB-B17SOC
FAN-150-48B	48	54.81	1392.17	52.56	1335.02	1.31	33.32	2	FBH-1250	CAB-B14SOM
<b>300 Class Pressure Rating</b>										
FAN-300-1/2	1/2	3.75	95.25	2.62	66.55	.68	17.32	150	FBH-625	CAB-B7SOM
FAN-300-3/4	3/4	4.62	117.35	3.25	82.55	.81	20.62	100	FBH-750	CAB-B7SOM
FAN-300-1	1	4.88	123.95	3.50	88.90	.81	20.62	100	FBH-750	CAB-B7SOM
FAN-300-1-1/4	1-1/4	5.25	133.35	3.88	98.55	.81	20.62	100	FBH-750	CAB-B7SOM
FAN-300-1-1/2	1-1/2	6.12	155.45	4.50	114.30	.94	23.93	75	FBH-875	CAB-B11SOM
FAN-300-2	2	6.50	165.10	5.00	127.00	.81	20.62	75	FBH-750	CAB-B11SOM
FAN-300-2-1/2	2-1/2	7.50	190.50	5.88	149.35	.94	23.93	50	FBH-875	CAB-B11SOM
FAN-300-3	3	8.25	209.55	6.62	168.15	.94	23.93	50	FBH-875	CAB-B11SOM
FAN-300-3-1/2	3-1/2	9.00	228.60	7.25	184.15	.94	23.93	40	FBH-875	CAB-B11SOM
FAN-300-4	4	10.00	254.00	7.88	200.15	.94	23.93	35	FBH-875	CAB-B11SOM
FAN-300-5	5	11.00	279.40	9.25	234.95	.94	23.93	25	FBH-875	CAB-B11SOM
FAN-300-6	6	12.50	317.50	10.62	269.75	.94	23.93	25	FBH-875	CAB-B11SOM
FAN-300-8	8	15.00	381.00	13.00	330.20	1.06	26.97	15	FBH-1000	CAB-B11SOM
FAN-300-10	10	17.50	444.50	15.25	387.35	1.18	30.02	10	FBH-1125	CAB-B11SOM
FAN-300-12	12	20.50	520.70	17.75	450.85	1.31	33.32	10	FBH-1250	CAB-B11SOM
FAN-300-14	14	23.00	584.20	20.25	514.35	1.31	33.32	8	FBH-1250	CAB-B11SOM
FAN-300-16	16	25.50	647.70	22.50	571.50	1.44	36.63	5	FBH-1375	CAB-B11SOM
FAN-300-18	18	28.00	711.20	24.75	628.65	1.44	36.63	5	FBH-1375	CAB-B14SOM
FAN-300-20	20	30.50	774.70	27.00	685.80	1.44	36.63	5	FBH-1375	CAB-B14SOM
FAN-300-22	22	33.00	838.20	29.25	742.95	1.68	42.72	2	FBH-1625	CAB-B17SOC
FAN-300-24	24	36.00	914.40	32.00	812.80	1.68	42.72	2	FBH-1625	CAB-B17SOC
FAN-300-26A	26	38.25	971.55	34.50	876.30	1.81	46.02	2	FBH-1750	CAB-B17SOC
FAN-300-26B	26	34.12	866.65	31.62	803.15	1.44	36.63	2	FBH-1375	CAB-B17SOC
FAN-300-28A	28	40.75	1035.05	37.00	939.80	1.81	46.02	2	FBH-1750	CAB-B17SOC
FAN-300-28B	28	36.25	920.75	33.75	857.25	1.44	36.63	2	FBH-1375	CAB-B17SOC
FAN-300-30A	30	43.00	1092.20	39.25	996.95	1.94	49.33	2	FBH-1875	CAB-B17SOC

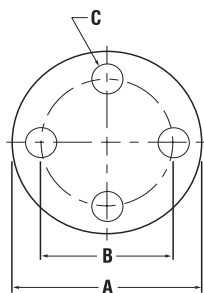


Caplug No.	Dimensions						Min Sales Quantity	Fasteners		
	Nom Pipe Size	A		B		C		Matching Bolt Hole Plug	Cable Tie	
		In	mm	In	mm	In	mm			
<b>300 Class Pressure Rating (cont.)</b>										
FAN-300-30B	30	39.00	990.60	36.25	920.75	1.56	39.67	2	FBH-1500	CAB-B17S0C
FAN-300-32A	32	45.25	1149.35	41.50	1054.10	2.06	52.37	2	FBH-2000	CAB-B17S0C
FAN-300-32B	32	41.50	1054.10	38.50	977.90	1.68	42.72	2	FBH-1625	CAB-B17S0C
FAN-300-34A	34	47.50	1206.50	43.50	1104.90	2.06	52.37	2	FBH-2000	CAB-B24H0L
FAN-300-34B	34	43.62	1107.95	40.62	1031.75	1.68	42.72	2	FBH-1625	CAB-B17S0C
FAN-300-36A	36	50.00	1270.00	46.00	1168.40	2.18	55.42	2	FBH-2125	CAB-B24H0L
FAN-300-36B	36	46.12	1171.45	42.88	1089.15	1.81	46.02	2	FBH-1750	CAB-B17S0C
FAN-300-38A	38	46.00	1168.40	43.00	1092.20	1.68	42.72	2	FBH-1625	CAB-B17S0C
FAN-300-38B	38	48.12	1222.25	44.88	1139.95	1.81	46.02	2	FBH-1750	CAB-B24H0L
FAN-300-40A	40	48.75	1238.25	45.50	1155.70	1.81	46.02	2	FBH-1750	CAB-B24H0L
FAN-300-40B	40	50.12	1273.05	46.88	1190.75	1.81	46.02	2	FBH-1750	CAB-B24H0L
FAN-300-42A	42	50.75	1289.05	47.50	1206.50	1.81	46.02	2	FBH-1750	CAB-B24H0L
FAN-300-42B	42	52.50	1333.50	49.00	1244.60	1.94	49.33	2	FBH-1875	CAB-B24H0L
FAN-300-44A	44	53.25	1352.55	49.75	1263.65	1.94	49.33	2	FBH-1875	CAB-B24H0L
FAN-300-44B	44	54.50	1384.30	51.00	1295.40	1.94	49.33	2	FBH-1875	CAB-B24H0L
FAN-300-46A	46	55.75	1416.05	52.00	1320.80	2.06	52.37	2	FBH-2000	CAB-B24H0L
FAN-300-46B	46	57.50	1460.50	53.75	1365.25	2.06	52.37	2	FBH-2000	CAB-B24H0L
FAN-300-48A	48	57.75	1466.85	54.00	1371.60	2.06	52.37	2	FBH-2000	CAB-B24H0L
FAN-300-48B	48	59.50	1511.30	55.75	1416.05	2.06	52.37	2	FBH-2000	CAB-B24H0L
<b>400 Class Pressure Rating</b>										
FAN-400-1/2	1/2	3.75	95.25	2.62	66.55	.68	17.32	150	FBH-625	CAB-B7S0M
FAN-400-3/4	3/4	4.62	117.35	3.25	82.55	.81	20.62	100	FBH-750	CAB-B7S0M
FAN-400-1	1	4.88	123.95	3.50	88.90	.81	20.62	100	FBH-750	CAB-B7S0M
FAN-400-1 1/4	1-1/4	5.25	133.35	3.88	98.55	.81	20.62	100	FBH-750	CAB-B7S0M
FAN-400-1 1/2	1-1/2	6.12	155.45	4.50	114.30	.94	23.93	75	FBH-875	CAB-B11S0M
FAN-400-2	2	6.50	165.10	5.00	127.00	.81	20.62	75	FBH-750	CAB-B11S0M
FAN-400-2 1/2	2-1/2	7.50	190.50	5.88	149.35	.94	23.93	50	FBH-875	CAB-B11S0M
FAN-400-3	3	8.25	209.55	6.62	168.15	.94	23.93	50	FBH-875	CAB-B11S0M
FAN-400-3 1/2	3-1/2	9.00	228.60	7.25	184.15	1.06	26.97	40	FBH-1000	CAB-B11S0M
FAN-400-4	4	10.00	254.00	7.88	200.15	1.06	26.97	35	FBH-1000	CAB-B11S0M
FAN-400-5	5	11.00	279.40	9.25	234.95	1.06	26.97	25	FBH-1000	CAB-B11S0M
FAN-400-6	6	12.50	317.50	10.62	269.75	1.06	26.97	25	FBH-1000	CAB-B11S0M
FAN-400-8	8	15.00	381.00	13.00	330.20	1.18	30.02	15	FBH-1125	CAB-B11S0M
FAN-400-10	10	17.50	444.50	15.25	387.35	1.31	33.32	10	FBH-1250	CAB-B14S0M
FAN-400-12	12	20.50	520.70	17.75	450.85	1.44	36.63	10	FBH-1375	CAB-B14S0M
FAN-400-14	14	23.00	584.20	20.25	514.35	1.44	36.63	8	FBH-1375	CAB-B14S0M
FAN-400-16	16	25.50	647.70	22.50	571.50	1.56	39.67	5	FBH-1500	CAB-B14S0M
FAN-400-18	18	28.00	711.20	24.75	628.65	1.56	39.67	5	FBH-1500	CAB-B14S0M
FAN-400-20	20	30.50	774.70	27.00	685.80	1.68	42.72	5	FBH-1625	CAB-B17S0C
FAN-402-22	20	33.00	838.20	29.25	742.95	1.81	46.02	2	FBH-1750	CAB-B17S0C
FAN-400-24	24	36.00	914.40	32.00	812.80	1.94	49.33	2	FBH-1875	CAB-B17S0C
FAN-400-26A	26	38.25	971.55	34.50	876.30	1.94	49.33	2	FBH-1875	CAB-B17S0C
FAN-400-26B	26	33.50	850.90	30.75	781.05	1.56	39.67	2	FBH-1500	CAB-B17S0C
FAN-400-28A	28	40.75	1035.05	37.00	939.80	2.06	52.37	2	FBH-2000	CAB-B17S0C
FAN-400-28B	28	36.00	914.40	33.00	838.20	1.68	42.72	2	FBH-1625	CAB-B17S0C
FAN-400-30A	30	43.00	1092.20	39.25	996.95	2.18	55.42	2	FBH-2125	CAB-B24H0L
FAN-400-30B	30	38.25	971.55	35.25	895.35	1.68	42.72	2	FBH-1625	CAB-B17S0C
FAN-400-32A	32	45.25	1149.35	41.50	1054.10	2.18	55.42	2	FBH-2125	CAB-B24H0L
FAN-400-32B	32	40.75	1035.05	37.50	952.50	1.81	46.02	2	FBH-1750	CAB-B17S0C
FAN-400-34A	34	47.50	1206.50	43.50	1104.90	2.18	55.42	2	FBH-2125	CAB-B24H0L
FAN-400-34B	34	42.75	1085.85	39.50	1003.30	1.81	46.02	2	FBH-1750	CAB-B24H0L
FAN-400-36A	36	50.00	1270.00	46.00	1168.40	2.18	55.42	2	FBH-2125	CAB-B24H0L
FAN-400-36B	36	45.50	1155.70	42.00	1066.80	1.94	49.33	2	FBH-1875	CAB-B24H0L
FAN-400-38A	38	47.50	1206.50	44.00	1117.60	1.94	49.33	2	FBH-1875	CAB-B24H0L
FAN-400-38B	38	47.50	1206.50	44.00	1117.60	1.94	49.33	2	FBH-1875	CAB-B24H0L
FAN-400-40A	40	50.00	1270.00	46.25	1174.75	2.06	52.37	2	FBH-2000	CAB-B24H0L
FAN-400-40B	40	50.00	1270.00	46.25	1174.75	2.06	52.37	2	FBH-2000	CAB-B24H0L
FAN-400-42A	42	52.00	1320.80	48.25	1225.55	2.06	52.37	2	FBH-2000	CAB-B24H0L
FAN-400-42B	42	52.00	1320.80	48.25	1225.55	2.06	52.37	2	FBH-2000	CAB-B24H0L
FAN-400-44A	44	54.50	1384.30	50.50	1282.70	2.18	55.42	2	FBH-2125	CAB-B24H0L
FAN-400-44B	44	54.50	1384.30	50.50	1282.70	2.18	55.42	2	FBH-2125	CAB-B24H0L
FAN-400-46A	46	56.75	1441.45	52.75	1339.85	2.18	55.42	2	FBH-2125	CAB-B24H0L
FAN-400-46B	46	56.75	1441.45	52.75	1339.85	2.18	55.42	2	FBH-2125	CAB-B24H0L
FAN-400-48A	48	59.50	1511.30	55.25	1403.35	2.44	62.03	2	FBH-2375	CAB-B24H0L
FAN-400-48B	48	59.50	1511.30	55.25	1403.35	2.44	62.03	2	FBH-2375	CAB-B24H0L
<b>600 Class Pressure Rating</b>										
FAN-600-1/2	1/2	3.75	95.25	2.62	66.55	.68	17.32	150	FBH-625	CAB-B7S0M
FAN-600-3/4	3/4	4.62	117.35	3.25	82.55	.81	20.62	100	FBH-750	CAB-B7S0M
FAN-600-1	1	4.88	123.95	3.50	88.90	.81	20.62	100	FBH-750	CAB-B7S0M
FAN-600-1 1/4	1-1/4	5.25	133.35	3.88	98.55	.81	20.62	100	FBH-750	CAB-B7S0M
FAN-600-1 1/2	1-1/2	6.12	155.45	4.50	114.30	.94	23.93	75	FBH-875	CAB-B11S0M
FAN-600-2	2	6.50	165.10	5.00	127.00	.81	20.62	75	FBH-750	CAB-B11S0M
FAN-600-2 1/2	2-1/2	7.50	190.50	5.88	149.35	.94	23.93	50	FBH-875	CAB-B11S0M
FAN-600-3	3	8.25	209.55	6.62	168.15	.94	23.93	50	FBH-875	CAB-B11S0M
FAN-600-3 1/2	3-1/2	9.00	228.60	7.25	184.15	1.06	26.97	40	FBH-1000	CAB-B11S0M
FAN-600-4	4	10.75	273.05	8.50	215.90	1.06	26.97	25	FBH-1000	CAB-B11S0M
FAN-600-5	5	13.00	330.20	10.50	266.70	1.18	30.02	20	FBH-1125	CAB-B11S0M
FAN-600-6	6	14.00	355.60	11.50	292.10	1.18	30.02	15	FBH-1125	CAB-B11S0M

*FAN Series continues on next page*

**COVERS WITH BOLT HOLES**

*FAN Series (cont.)*



All standard die-cut flange covers are 1/16" thick. Alternate materials and thicknesses are available.

Caplug No.	Nom Pipe Size	Dimensions						Min Sales Quantity	Fasteners	
		A		B		C			Matching Bolt Hole Plug	Cable Tie
		In	mm	In	mm	In	mm			
<b>600 Class Pressure Rating (cont.)</b>										
FAN-600-8	8	16.50	419.10	13.75	349.25	1.31	33.32	15	FBH-1250	CAB-B11SOM
FAN-600-10	10	20.00	508.00	17.00	431.80	1.44	36.63	10	FBH-1375	CAB-B14SOM
FAN-600-12	12	22.00	558.80	19.25	488.95	1.44	36.63	8	FBH-1375	CAB-B11SOM
FAN-600-14	14	23.75	603.25	20.75	527.05	1.56	39.67	8	FBH-1500	CAB-B14SOM
FAN-600-16	16	27.00	685.80	23.75	603.25	1.68	42.72	5	FBH-1625	CAB-B14SOM
FAN-600-18	18	29.25	742.95	25.75	654.05	1.81	46.02	5	FBH-1750	CAB-B14SOM
FAN-600-20	20	32.00	812.80	28.50	723.90	1.81	46.02	4	FBH-1750	CAB-B14SOM
FAN-600-22	22	34.25	869.95	30.63	778.00	1.81	46.02	2	FBH-1750	CAB-B14SOM
FAN-600-24	24	37.00	939.80	33.00	838.20	2.06	52.37	2	FBH-2000	CAB-B24HOL
FAN-600-26A	26	40.00	1016.00	36.00	914.40	2.06	52.37	2	FBH-2000	CAB-B24HOL
FAN-600-26B	26	35.00	889.00	31.75	806.45	1.81	46.02	2	FBH-1750	CAB-B24HOL
FAN-600-28A	28	42.25	1073.15	38.00	965.20	2.18	55.42	2	FBH-2125	CAB-B24HOL
FAN-600-28B	28	37.50	952.50	34.00	863.60	1.94	49.33	2	FBH-1875	CAB-B24HOL
FAN-600-30A	30	44.50	1130.30	40.25	1022.35	2.18	55.42	2	FBH-2125	CAB-B24HOL
FAN-600-30B	30	40.25	1022.35	36.50	927.10	2.06	52.37	2	FBH-2000	CAB-B24HOL
FAN-600-32A	32	47.00	1193.80	42.50	1079.50	2.44	62.03	2	FBH-2375	CAB-B24HOL
FAN-600-32B	32	42.75	1085.85	38.75	984.25	2.18	55.42	2	FBH-2125	CAB-B24HOL
FAN-600-34A	34	49.00	1244.60	44.50	1130.30	2.44	62.03	2	FBH-2375	CAB-B24HOL
FAN-600-34B	34	45.75	1162.05	41.50	1054.10	2.44	62.03	2	FBH-2375	CAB-B24HOL
FAN-600-36A	36	51.75	1314.45	47.00	1193.80	2.68	68.12	2	FBH-2625	CAB-B24HOL
FAN-600-36B	36	47.75	1212.85	43.50	1104.90	2.44	62.03	2	FBH-2375	CAB-B24HOL
FAN-600-38A	38	50.00	1270.00	45.75	1162.05	2.44	62.03	2	FBH-2375	CAB-B24HOL
FAN-600-38B	38	50.00	1270.00	45.75	1162.05	2.44	62.03	2	FBH-2375	CAB-B24HOL
FAN-600-40A	40	52.00	1320.80	47.75	1212.85	2.44	62.03	2	FBH-2375	CAB-B24HOL
FAN-600-40B	40	52.00	1320.80	47.75	1212.85	2.44	62.03	2	FBH-2375	CAB-B24HOL
FAN-600-42A	42	55.25	1403.35	50.50	1282.70	2.68	68.12	2	FBH-2625	CAB-B24HOL
FAN-600-42B	42	55.25	1403.35	50.50	1282.70	2.68	68.12	2	FBH-2625	CAB-B24HOL
FAN-600-44A	44	57.25	1454.15	52.50	1333.50	2.68	68.12	2	FBH-2625	CAB-B24HOL
FAN-600-44B	44	57.25	1454.15	52.50	1333.50	2.68	68.12	2	FBH-2625	CAB-B24HOL
FAN-600-46A	46	59.50	1511.30	54.75	1390.65	2.68	68.12	2	FBH-2625	CAB-B24HOL
FAN-600-46B	46	59.50	1511.30	54.75	1390.65	2.68	68.12	2	FBH-2625	CAB-B24HOL

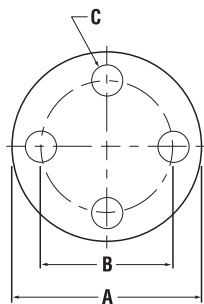
<b>900 Class Pressure Rating</b>										
Caplug No.	Nom Pipe Size	A In	A mm	B In	B mm	C In	C mm	Min Sales Quantity	Matching Bolt Hole Plug	Cable Tie
FAN-900-1/2	1/2	4.75	120.65	3.25	82.55	.94	23.93	100	FBH-875	CAB-B11SOM
FAN-900-3/4	3/4	5.12	130.05	3.50	88.90	.94	23.93	100	FBH-875	CAB-B11SOM
FAN-900-1	1	5.88	149.35	4.00	101.60	1.06	26.97	75	FBH-1000	CAB-B11SOM
FAN-900-1 1/4	1-1/4	6.25	158.75	4.38	111.25	1.06	26.97	75	FBH-1000	CAB-B11SOM
FAN-900-1 1/2	1-1/2	7.00	177.80	4.88	123.95	1.19	30.28	50	FBH-1125	CAB-B11SOM
FAN-900-2	2	8.50	215.90	6.50	165.10	1.06	26.97	50	FBH-1000	CAB-B11SOM
FAN-900-2 1/2	2-1/2	9.62	244.35	7.50	190.50	1.19	30.28	40	FBH-1125	CAB-B11SOM
FAN-900-3	3	9.50	241.30	7.50	190.50	1.06	26.97	40	FBH-1000	CAB-B11SOM
FAN-900-4	4	11.50	292.10	9.25	234.95	1.31	33.32	25	FBH-1250	CAB-B11SOM
FAN-900-5	5	13.75	349.25	11.00	279.40	1.44	36.63	20	FBH-1375	CAB-B14SOM
FAN-900-6	6	15.00	381.00	12.50	317.50	1.31	33.32	15	FBH-1250	CAB-B14SOM
FAN-900-8	8	18.50	469.90	15.50	393.70	1.56	39.67	10	FBH-1500	CAB-B14SOM
FAN-900-10	10	21.50	546.10	18.50	469.90	1.56	39.67	8	FBH-1500	CAB-B14SOM
FAN-900-12	12	24.00	609.60	21.00	533.40	1.56	39.67	8	FBH-1500	CAB-B17SOC
FAN-900-14	14	25.25	641.35	22.00	558.80	1.69	42.98	5	FBH-1625	CAB-B17SOC
FAN-900-16	16	27.75	704.85	24.25	615.95	1.81	46.02	5	FBH-1750	CAB-B17SOC
FAN-900-18	18	31.00	787.40	27.00	685.80	2.06	52.37	5	FBH-2000	CAB-B24HOL
FAN-900-20	20	33.75	857.25	29.50	749.30	2.19	55.68	2	FBH-2125	CAB-B24HOL
FAN-900-24	24	41.00	1041.40	35.50	901.70	2.69	68.38	2	FBH-2625	CAB-B24HOL
FAN-900-26A	26	42.75	1085.85	37.50	952.50	2.94	74.73	2	FBH-2875	CAB-B24HOL
FAN-900-26B	26	40.25	1022.35	35.50	901.70	2.68	68.12	2	FBH-2625	CAB-B24HOL
FAN-900-28A	28	46.00	1168.40	40.25	1022.35	3.18	80.82	2	n/a	CAB-B24HOL
FAN-900-28B	28	43.50	1104.90	38.25	971.55	2.94	74.73	2	FBH-2875	CAB-B24HOL
FAN-900-30A	30	48.50	1231.90	42.75	1085.85	3.18	80.82	2	n/a	CAB-B36HOL
FAN-900-30B	30	46.50	1181.10	40.75	1035.05	3.18	80.82	2	n/a	CAB-B24HOL
FAN-900-32A	32	51.75	1314.45	45.50	1155.70	3.44	87.43	2	n/a	CAB-B36HOL
FAN-900-32B	32	48.75	1238.25	43.00	1092.20	3.18	80.82	2	n/a	CAB-B36HOL
FAN-900-34A	34	55.00	1397.00	48.25	1225.55	3.68	93.52	2	n/a	CAB-B36HOL
FAN-900-34B	34	51.75	1314.45	45.50	1155.70	3.44	87.43	2	n/a	CAB-B36HOL
FAN-900-36A	36	57.50	1460.50	50.75	1289.05	3.68	93.52	2	n/a	CAB-B36HOL
FAN-900-36B	36	53.00	1346.20	47.25	1200.15	3.18	80.82	2	n/a	CAB-B36HOL
FAN-900-38A	38	57.50	1460.50	50.75	1289.05	3.68	93.52	2	n/a	CAB-B36HOL
FAN-900-38B	38	57.50	1460.50	50.75	1289.05	3.68	93.52	2	n/a	CAB-B36HOL
FAN-900-40A	40	59.50	1511.30	52.75	1339.85	3.68	93.52	2	n/a	CAB-B36HOL
FAN-900-40B	40	59.50	1511.30	52.75	1339.85	3.68	93.52	2	n/a	CAB-B36HOL

<b>1500 Class Pressure Rating</b>										
Caplug No.	Nom Pipe Size	A In	A mm	B In	B mm	C In	C mm	Min Sales Quantity	Matching Bolt Hole Plug	Cable Tie
FAN-1500-1/2	1/2	4.75	120.65	3.25	82.55	.94	23.93	100	FBH-875	CAB-B11SOM
FAN-1500-3/4	3/4	5.12	130.05	3.50	88.90	.94	23.93	100	FBH-875	CAB-B11SOM
FAN-1500-1	1	5.88	149.35	4.00	101.60	1.06	26.97	75	FBH-1000	CAB-B11SOM
FAN-1500-1 1/4	1-1/4	6.25	158.75	4.38	111.25	1.06	26.97	75	FBH-1000	CAB-B11SOM
FAN-1500-1 1/2	1-1/2	7.00	177.80	4.88	123.95	1.19	30.28	50	FBH-1125	CAB-B11SOM
FAN-1500-2	2	8.50	215.90	6.50	165.10	1.06	26.97	50	FBH-1000	CAB-B11SOM
FAN-1500-2 1/2	2-1/2	9.62	244.35	7.50	190.50	1.19	30.28	40	FBH-1125	CAB-B11SOM
FAN-1500-3	3	10.50	266.70	8.00	203.20	1.31	33.32	25	FBH-1250	CAB-B14SOM
FAN-1500-4	4	12.25	311.15	9.50	241.30	1.44	36.63	25	FBH-1375	CAB-B14SOM
FAN-1500-5	5	14.75	374.65	11.50	292.10	1.69	42.98	15	FBH-1625	CAB-B17SOC
FAN-1500-6	6	15.50	393.70	12.50	317.50	1.56	39.67	15	FBH-1500	CAB-B17SOC
FAN-1500-8	8	19.00	482.60	15.50	393.70	1.81	46.02	10	FBH-1750	CAB-B17SOC

All information herein is subject to change without notice. We do not assume any liability for the materials, specifications or information provided herein and this catalog does not create any warranty or representation related to the products. All warranties, specifications and representations as to the products displayed herein are provided by the manufacturer. Printed in U.S.A.

## COVERS WITH BOLT HOLES

## FAN Series (cont.)



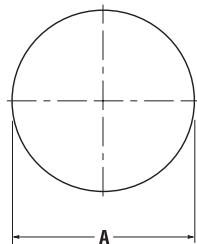
Caplug No.	Nom Pipe Size	Dimensions						Min Sales Quantity	Fasteners	
		A		B		C			Matching Bolt Hole Plug	Cable Tie
		In	mm	In	mm	In	mm			
<b>1500 Class Pressure Rating (cont.)</b>										
FAN-1500-10	10	23.00	584.20	19.00	482.60	2.06	52.37	8	FBH-2000	CAB-B24HOL
FAN-1500-12	12	26.50	673.10	22.50	571.50	2.19	55.68	5	FBH-2125	CAB-B24HOL
FAN-1500-14	14	29.50	749.30	25.00	635.00	2.44	62.03	5	FBH-2375	CAB-B24HOL
FAN-1500-16	16	32.50	825.50	27.75	704.85	2.69	68.38	4	FBH-2625	CAB-B24HOL
FAN-1500-18	18	36.00	914.40	30.50	774.70	2.94	74.73	2	FBH-2875	CAB-B24HOL
FAN-1500-20	20	38.75	984.25	32.75	831.85	3.19	81.08	2	n/a	CAB-B36HOL
FAN-1500-24	24	46.00	1168.40	39.00	990.60	3.69	93.78	2	n/a	CAB-B36HOL
<b>2500 Class Pressure Rating</b>										
FAN-2500-1/2	1/2	5.25	133.35	3.50	88.90	.94	23.93	100	FBH-875	CAB-B11SOM
FAN-2500-3/4	3/4	5.50	139.70	3.75	95.25	.94	23.93	75	FBH-875	CAB-B11SOM
FAN-2500-1	1	6.25	158.75	4.25	107.95	1.06	26.97	75	FBH-1000	CAB-B11SOM
FAN-2500-1 1/4	1-1/4	7.25	184.15	5.13	130.30	1.19	30.28	50	FBH-1125	CAB-B11SOM
FAN-2500-1 1/2	1-1/2	8.00	203.20	5.75	146.05	1.31	33.32	50	FBH-1250	CAB-B11SOM
FAN-2500-2	2	9.25	234.95	6.75	171.45	1.19	30.28	40	FBH-1125	CAB-B14SOM
FAN-2500-2 1/2	2-1/2	10.50	266.70	7.75	196.85	1.31	33.32	25	FBH-1250	CAB-B14SOM
FAN-2500-3	3	12.00	304.80	9.00	228.60	1.44	36.63	25	FBH-1375	CAB-B14SOM
FAN-2500-4	4	14.00	355.60	10.75	273.05	1.69	42.98	15	FBH-1625	CAB-B17SOC
FAN-2500-5	5	16.50	419.10	12.75	323.85	1.94	49.33	15	FBH-1875	CAB-B17SOC
FAN-2500-6	6	19.00	482.60	14.50	368.30	2.19	55.68	10	FBH-2125	CAB-B24HOL
FAN-2500-8	8	21.75	552.45	17.25	438.15	2.19	55.68	8	FBH-2125	CAB-B24HOL
FAN-2500-10	10	26.50	673.10	21.25	539.75	2.69	68.38	5	FBH-2625	CAB-B24HOL
FAN-2500-12	12	30.00	762.00	24.38	619.25	2.94	74.73	5	FBH-2875	CAB-B36HOL
<b>75 Class Pressure Rating</b>										
FAN-75-26	26	30.00	762.00	28.50	723.90	.81	20.62	5	FBH-750	CAB-B11SOM
FAN-75-28	28	32.00	812.80	30.50	774.70	.81	20.62	4	FBH-750	CAB-B11SOM
FAN-75-30	30	34.00	863.60	32.50	825.50	.81	20.62	2	FBH-750	CAB-B11SOM
FAN-75-32	32	36.00	914.40	34.50	876.30	.81	20.62	2	FBH-750	CAB-B11SOM
FAN-75-34	34	38.00	965.20	36.50	927.10	.81	20.62	2	FBH-750	CAB-B11SOM
FAN-75-36	36	40.69	1033.53	39.06	992.12	.94	23.93	2	FBH-875	CAB-B11SOM
FAN-75-38	38	42.69	1084.33	41.06	1042.92	.94	23.93	2	FBH-875	CAB-B11SOM
FAN-75-40	40	44.69	1135.13	43.06	1093.72	.94	23.93	2	FBH-875	CAB-B11SOM
FAN-75-42	42	46.69	1185.93	45.06	1144.52	.94	23.93	2	FBH-875	CAB-B11SOM
FAN-75-44	44	49.25	1250.95	47.38	1203.45	1.06	26.97	2	FBH-1000	CAB-B11SOM
FAN-75-46	46	51.25	1301.75	49.38	1254.25	1.06	26.97	2	FBH-1000	CAB-B11SOM
FAN-75-48	48	53.25	1352.55	51.38	1305.05	1.06	26.97	2	FBH-1000	CAB-B14SOM
FAN-75-50	50	55.25	1403.35	53.38	1355.85	1.06	26.97	2	FBH-1000	CAB-B14SOM
FAN-75-52	52	57.38	1457.45	55.50	1409.70	1.06	26.97	2	FBH-1000	CAB-B14SOM
FAN-75-54	54	59.38	1508.25	57.50	1460.50	1.06	26.97	2	FBH-1000	CAB-B14SOM

# FAF Series Self-Adhesive Flange Protectors – Full Face

These self-adhesive flange covers protect the full face of the flange and sealing surface. The protective back is easily peeled off so these covers can be quickly and easily installed. The adhesive is specially formulated to not leave any residue on the flange upon removal. Additional shapes and sizes are available. Sizes are in accordance with ANSI B-16.5 and ANSI B-16.47.



**Material:** High-Density Polyethylene **Color\*:** Black



All standard die-cut flange covers are 1/16" thick. Alternate materials and thicknesses are available.

Caplug No.	Dimensions			Packaging
	Nominal Pipe Size	A		Minimum Sales Quantity
		In	mm	
<b>150 Class Pressure Rating</b>				
FAF-150-1/2	1/2	3.50	88.87	100
FAF-150-3/4	3/4	3.88	98.51	75
FAF-150-1	1	4.25	107.91	50
FAF-150-1-1/4	1-1/4	4.63	117.43	50
FAF-150-1-1/2	1-1/2	5.00	126.95	50
FAF-150-2	2	6.00	152.34	35
FAF-150-2-1/2	2-1/2	7.00	177.73	25
FAF-150-3	3	7.50	190.43	25
FAF-150-3-1/2	3-1/2	8.50	215.82	20
FAF-150-4	4	9.00	228.51	15
FAF-150-5	5	10.00	253.90	15
FAF-150-6	6	11.00	279.29	10
FAF-150-8	8	13.50	342.77	8
FAF-150-10	10	16.00	406.24	5
FAF-150-12	12	19.00	482.41	4
FAF-150-14	14	21.00	533.19	4
FAF-150-16	16	23.50	596.67	2
FAF-150-18	18	25.00	634.75	25
FAF-150-20	20	27.50	698.23	2
FAF-150-22	22	29.50	749.30	2
FAF-150-24	24	32.00	812.80	2
FAF-150-26A	26	34.25	869.95	2
FAF-150-26B	26	30.94	785.88	2
FAF-150-28A	28	36.50	927.10	2
FAF-150-28B	28	32.94	836.68	2
FAF-150-30A	30	38.75	984.25	2
FAF-150-30B	30	34.94	887.48	2
FAF-150-32A	32	41.75	1060.45	2
FAF-150-32B	32	37.06	941.32	2
FAF-150-34A	34	43.75	1111.25	2
FAF-150-34B	34	39.56	1004.82	2
FAF-150-36A	36	46.00	1168.40	2
FAF-150-36B	36	41.62	1057.15	2
FAF-150-38A	38	48.75	1238.25	2
FAF-150-38B	38	44.25	1123.95	2
FAF-150-40A	40	50.75	1289.05	2
FAF-150-40B	40	46.25	1174.75	2
FAF-150-42A	42	53.00	1346.20	2
FAF-150-42B	42	48.25	1225.55	2
<b>300 Class Pressure Rating</b>				
FAF-300-1/2	1/2	3.75	95.21	75
FAF-300-3/4	3/4	4.63	117.43	50
FAF-300-1	1	4.88	123.90	50
FAF-300-1-1/4	1-1/4	5.25	133.30	40
FAF-300-1-1/2	1-1/2	6.19	157.16	35
FAF-300-2	2	6.50	165.04	30
FAF-300-2-1/2	2-1/2	7.50	190.43	25
FAF-300-3	3	8.25	209.47	20
FAF-300-3-1/2	3-1/2	9.00	228.51	15
FAF-300-4	4	10.00	253.90	15
FAF-300-5	5	11.00	279.29	10
FAF-300-6	6	12.50	317.38	10
FAF-300-8	8	15.00	380.85	5
FAF-300-10	10	17.50	444.33	5
FAF-300-12	12	20.50	520.50	4
FAF-300-14	14	23.00	583.97	2
FAF-300-16	16	25.50	647.45	25
FAF-300-18	18	28.00	710.92	25
FAF-300-20	20	30.50	774.70	2
FAF-300-22	22	33.00	838.20	2
FAF-300-24	24	36.00	914.40	2
FAF-300-26A	26	38.25	971.55	2
FAF-300-26B	26	34.12	866.65	2

# FAF Series

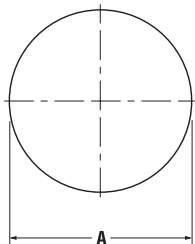
Self-Adhesive Flange Protectors – Full Face (cont.)

Caplug No.	Nominal Pipe Size	Dimensions		Packaging
		A		Minimum Sales Quantity
		In	mm	
<b>300 Class Pressure Rating</b>				
FAF-300-28A	28	40.75	1035.05	2
FAF-300-28B	28	36.25	920.75	2
FAF-300-30A	30	43.00	1092.20	2
FAF-300-30B	30	39.00	990.60	2
FAF-300-32A	32	45.25	1149.35	2
FAF-300-32B	32	41.50	1054.10	2
FAF-300-34A	34	47.50	1206.50	2
FAF-300-34B	34	43.62	1107.95	2
FAF-300-36A	36	50.00	1270.00	2
FAF-300-36B	36	46.12	1171.45	2
FAF-300-38A	38	46.00	1168.40	2
FAF-300-38B	38	48.12	1222.25	2
FAF-300-40A	40	48.75	1238.25	2
FAF-300-40B	40	50.12	1273.05	2
FAF-300-42A	42	50.75	1289.05	2
FAF-300-42B	42	52.50	1333.50	2
<b>400 Class Pressure Rating</b>				
FAF-400-1/2	1/2	3.75	95.25	75
FAF-400-3/4	3/4	4.62	117.35	50
FAF-400-1	1	4.88	123.95	50
FAF-400-1 1/4	1-1/4	5.25	133.35	40
FAF-400-1 1/2	1-1/2	6.12	155.45	35
FAF-400-2	2	6.50	165.10	35
FAF-400-2 1/2	2-1/2	7.50	190.50	25
FAF-400-3	3	8.25	209.55	20
FAF-400-3 1/2	3-1/2	9.00	228.60	15
FAF-400-4	4	10.00	254.00	15
FAF-400-5	5	11.00	279.40	10
FAF-400-6	6	12.50	317.50	10
FAF-400-8	8	15.00	381.00	5
FAF-400-10	10	17.50	444.50	5
FAF-400-12	12	20.50	520.70	4
FAF-400-14	14	23.00	584.20	2
FAF-400-16	16	25.50	647.70	2
FAF-400-18	18	28.00	711.20	2
FAF-400-20	20	30.50	774.70	2
FAF-400-22	20	33.00	838.20	2
FAF-400-24	24	36.00	914.40	2
FAF-400-26A	26	38.25	971.55	2
FAF-400-26B	26	33.50	850.90	2
FAF-400-28A	28	40.75	1035.05	2
FAF-400-28B	28	36.00	914.40	2
FAF-400-30A	30	43.00	1092.20	2
FAF-400-30B	30	38.25	971.55	2
FAF-400-32A	32	45.25	1149.35	2
FAF-400-32B	32	40.75	1035.05	2
FAF-400-34A	34	47.50	1206.50	2
FAF-400-34B	34	42.75	1085.85	2
FAF-400-36A	36	50.00	1270.00	2
FAF-400-36B	36	45.50	1155.70	2
FAF-400-38A	38	47.50	1206.50	2
FAF-400-38B	38	47.50	1206.50	2
FAF-400-40A	40	50.00	1270.00	2
FAF-400-40B	40	50.00	1270.00	2
FAF-400-42A	42	52.00	1320.80	2
FAF-400-42B	42	52.00	1320.80	2
<b>600 Class Pressure Rating</b>				
FAF-600-1/2	1/2	3.75	95.25	75
FAF-600-3/4	3/4	4.62	117.35	50
FAF-600-1	1	4.88	123.95	50
FAF-600-1 1/4	1-1/4	5.25	133.35	50
FAF-600-1 1/2	1-1/2	6.12	155.45	35
FAF-600-2	2	6.50	165.10	30
FAF-600-2 1/2	2-1/2	7.50	190.50	25
FAF-600-3	3	8.25	209.55	20
FAF-600-3 1/2	3-1/2	9.00	228.60	15
FAF-600-4	4	10.75	273.05	10
FAF-600-5	5	13.00	330.20	8
FAF-600-6	6	14.00	355.60	5
FAF-600-8	8	16.50	419.10	5
FAF-600-10	10	20.00	508.00	4
FAF-600-12	12	22.00	558.80	4
FAF-600-14	14	23.75	603.25	2

FAF Series continues on next page

# FAF Series

Self-Adhesive Flange Protectors – Full Face (cont.)



All standard die-cut flange covers are 1/16" thick. Alternate materials and thicknesses are available.

Caplug No.	Dimensions				Packaging
	Nominal Pipe Size	A		Minimum Sales Quantity	
		In	mm		
<b>600 Class Pressure Rating</b>					
FAF-600-16	16	27.00	685.80	2	
FAF-600-18	18	29.25	742.95	2	
FAF-600-20	20	32.00	812.80	2	
FAF-600-22	22	34.25	869.95	2	
FAF-600-24	24	37.00	939.80	2	
FAF-600-26A	26	40.00	1016.00	2	
FAF-600-26B	26	35.00	889.00	2	
FAF-600-28A	28	42.25	1073.15	2	
FAF-600-28B	28	37.50	952.50	2	
FAF-600-30A	30	44.50	1130.30	2	
FAF-600-30B	30	40.25	1022.35	2	
FAF-600-32A	32	47.00	1193.80	2	
FAF-600-32B	32	42.75	1085.85	2	
FAF-600-34A	34	49.00	1244.60	2	
FAF-600-34B	34	45.75	1162.05	2	
FAF-600-36A	36	51.75	1314.45	2	
FAF-600-36B	36	47.75	1212.85	2	
FAF-600-38A	38	50.00	1270.00	2	
FAF-600-38B	38	50.00	1270.00	2	
FAF-600-40A	40	52.00	1320.80	2	
FAF-600-40B	40	52.00	1320.80	2	
<b>900 Class Pressure Rating</b>					
FAF-900-1/2	1/2	4.75	120.65	50	
FAF-900-3/4	3/4	5.12	130.05	50	
FAF-900-1	1	5.88	149.35	40	
FAF-900-1 1/4	1-1/4	6.25	158.75	40	
FAF-900-1 1/2	1-1/2	7.00	177.80	25	
FAF-900-2	2	8.50	215.90	20	
FAF-900-2 1/2	2-1/2	9.62	244.35	15	
FAF-900-3	3	9.50	241.30	15	
FAF-900-4	4	11.50	292.10	10	
FAF-900-5	5	13.75	349.25	8	
FAF-900-6	6	15.00	381.00	5	
FAF-900-8	8	18.50	469.90	4	
FAF-900-10	10	21.50	546.10	4	
FAF-900-12	12	24.00	609.60	2	
FAF-900-14	14	25.25	641.35	25	
FAF-900-16	16	27.75	704.85	25	
FAF-900-18	18	31.00	787.40	2	
FAF-900-20	20	33.75	857.25	2	
FAF-900-24	24	41.00	1041.40	2	
FAF-900-26A	26	42.75	1085.85	2	
FAF-900-26B	26	40.25	1022.35	2	
FAF-900-28A	28	46.00	1168.40	2	
FAF-900-28B	28	43.50	1104.90	2	
FAF-900-30A	30	48.50	1231.90	2	
FAF-900-30B	30	46.50	1181.10	2	
FAF-900-32A	32	51.75	1314.45	2	
FAF-900-32B	32	48.75	1238.25	2	
FAF-900-34A	34	55.00	1397.00	2	
FAF-900-34B	34	51.75	1314.45	2	
<b>1500 Class Pressure Rating</b>					
FAF-1500-1/2	1/2	4.75	120.65	50	
FAF-1500-3/4	3/4	5.12	130.05	50	
FAF-1500-1	1	5.88	149.35	40	
FAF-1500-1 1/4	1-1/4	6.25	158.75	35	
FAF-1500-1 1/2	1-1/2	7.00	177.80	25	
FAF-1500-2	2	8.50	215.90	20	
FAF-1500-2 1/2	2-1/2	9.62	244.35	15	
FAF-1500-3	3	10.50	266.70	10	
FAF-1500-4	4	12.25	311.15	10	
FAF-1500-5	5	14.75	374.65	5	
FAF-1500-6	6	15.50	393.70	5	
FAF-1500-8	8	19.00	482.60	4	
FAF-1500-10	10	23.00	584.20	2	
FAF-1500-12	12	26.50	673.10	2	
FAF-1500-14	14	29.50	749.30	2	
FAF-1500-16	16	32.50	825.50	2	
FAF-1500-18	18	36.00	914.40	2	
FAF-1500-20	20	38.75	984.25	2	
FAF-1500-24	24	46.00	1168.40	2	

# FAF Series Self-Adhesive Flange Protectors – Full Face (cont.)

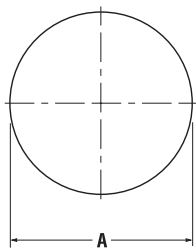
Caplug No.	Nominal Pipe Size	Dimensions		Packaging
		A		Minimum Sales Quantity
		In	mm	
<b>2500 Class Pressure Rating</b>				
FAF-2500-1/2	1/2	5.25	133.35	50
FAF-2500-3/4	3/4	5.50	139.70	40
FAF-2500-1	1	6.25	158.75	35
FAF-2500-1 1/4	1-1/4	7.25	184.15	25
FAF-2500-1 1/2	1-1/2	8.00	203.20	20
FAF-2500-2	2	9.25	234.95	15
FAF-2500-2 1/2	2-1/2	10.50	266.70	10
FAF-2500-3	3	12.00	304.80	10
FAF-2500-4	4	14.00	355.60	8
FAF-2500-5	5	16.50	419.10	5
FAF-2500-6	6	19.00	482.60	4
FAF-2500-8	8	21.75	552.45	4
FAF-2500-10	10	26.50	673.10	2
FAF-2500-12	12	30.00	762.00	2
<b>75 Class Pressure Rating</b>				
FAF-75-26	26	30.00	762.00	2
FAF-75-28	28	32.00	812.80	2
FAF-75-30	30	34.00	863.60	2
FAF-75-32	32	36.00	914.40	2
FAF-75-34	34	38.00	965.20	2
FAF-75-36	36	40.69	1033.53	2
FAF-75-38	38	42.69	1084.33	2
FAF-75-40	40	44.69	1135.13	2
FAF-75-42	42	46.69	1185.93	2
FAF-75-44	44	49.25	1250.95	2
FAF-75-46	46	51.25	1301.75	2
FAF-75-48	48	53.25	1352.55	2

# FAR Series Self-Adhesive Flange Protectors – Raised Face

These self-adhesive covers are for use on flanges with a raised face to protect or mask just the sealing surface. Simply peel off the protective backing and press the flange cover into place. The flange will quickly adhere and remain intact until intentionally removed. The specially formulated adhesive will not leave a residue. Additional shapes and sizes of these covers are available. Sizes are in accordance with ANSI B-16.5 and ANSI B-16.47.



**Material:** High-Density Polyethylene **Color\*:** Black

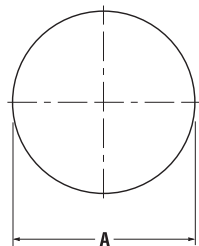


All standard die-cut flange covers are 1/16" thick. Alternate materials and thicknesses are available.

Caplug No.	Nominal Pipe Size	Dimensions		Packaging
		A		Minimum Sales Quantity
		In	mm	
<b>All Classes</b>				
FAR-1/2	1/2	1.38	35.05	250
FAR-3/4	3/4	1.69	42.93	250
FAR-1	1	2.00	50.80	200
FAR-1-1/4	1-1/4	2.50	63.50	150
FAR-1-1/2	1-1/2	2.88	73.15	100
FAR-2	2	3.62	91.95	75
FAR-2-1/2	2-1/2	4.12	104.65	75
FAR-3	3	5.00	127.00	50
FAR-3-1/2	3-1/2	5.50	139.70	50
FAR-4	4	6.19	157.23	35
FAR-5	5	7.31	185.67	25
FAR-6	6	8.50	215.90	20
FAR-8	8	10.62	269.75	10
FAR-10	10	12.75	323.85	10
FAR-12	12	15.00	381.00	5
FAR-14	14	16.25	412.75	5
FAR-16	16	18.50	469.90	5
FAR-18	18	21.00	533.40	4
FAR-20	20	23.00	584.20	2
FAR-22	22	25.25	641.35	2
FAR-24	24	27.25	692.15	2

*FAR Series continues on next page*

# FAR Series Self-Adhesive Flange Protectors – Raised Face (cont.)



All standard die-cut flange covers are 1/16" thick. Alternate materials and thicknesses are available.

Caplug No.	Nominal Pipe Size	Dimensions		Packaging Minimum Sales Quantity
		A		
		In	mm	
<b>26" to 48" Class Pressure Rating A 150 Flanges</b>				
FAR-26A	26	29.50	749.30	2
FAR-28A	28	31.50	800.10	2
FAR-30A	30	33.75	857.25	2
FAR-32A	32	36.00	914.40	2
FAR-34A	34	38.00	965.20	2
FAR-36A	36	40.25	1022.35	2
FAR-38A	38	42.25	1073.15	2
FAR-40A	40	44.25	1123.95	2
FAR-42A	42	47.00	1193.80	2
FAR-44A	44	49.00	1244.60	2
FAR-46A	46	51.00	1295.40	2
FAR-48A	48	53.50	1358.90	2
<b>26" to 50" Class Pressure Rating B 150 Flanges</b>				
FAR-150-26B	26	28.00	711.20	2
FAR-150-28B	28	30.00	762.00	2
FAR-150-30B	30	32.00	812.80	2
FAR-150-32B	32	34.00	863.60	2
FAR-150-34B	34	36.25	920.75	2
FAR-150-36B	36	38.25	971.55	2
FAR-150-38B	38	40.25	1022.35	2
FAR-150-40B	40	42.50	1079.50	2
FAR-150-42B	42	44.50	1130.30	2
FAR-150-44B	44	46.50	1181.10	2
FAR-150-46B	46	48.62	1234.95	2
FAR-150-48B	48	50.75	1289.05	2
FAR-150-50B	50	52.75	1339.85	2
<b>26" to 50" Class Pressure Rating A 300 Flanges</b>				
FAR-300-26A	26	29.50	749.30	2
FAR-300-28A	28	31.50	800.10	2
FAR-300-30A	30	33.75	857.25	2
FAR-300-32A	32	36.00	914.40	2
FAR-300-34A	34	38.00	965.20	2
FAR-300-36A	36	40.25	1022.35	2
FAR-300-38A	38	40.50	1028.70	2
FAR-300-40A	40	42.75	1085.85	2
FAR-300-42A	42	44.75	1136.65	2
FAR-300-44A	44	47.00	1193.80	2
FAR-300-46A	46	49.00	1244.60	2
FAR-300-48A	48	51.25	1301.75	2
FAR-300-50A	50	53.50	1358.90	2
<b>26" to 48" Class Pressure Rating B 300 Flanges</b>				
FAR-300-26B	26	29.00	736.60	2
FAR-300-28B	28	31.00	787.40	2
FAR-300-30B	30	33.25	844.55	2
FAR-300-32B	32	35.50	901.70	2
FAR-300-34B	34	37.50	952.50	2
FAR-300-36B	36	39.75	1009.65	2
FAR-300-38B	38	41.75	1060.45	2
FAR-300-40B	40	43.88	1114.55	2
FAR-300-42B	42	46.00	1168.40	2
FAR-300-44B	44	48.00	1219.20	2
FAR-300-46B	46	50.00	1270.00	2
FAR-300-48B	48	52.25	1327.15	2
<b>26" to 50" Class Pressure Rating A 400 Flanges</b>				
FAR-400-26A	26	29.50	749.30	2
FAR-400-28A	28	31.50	800.10	2
FAR-400-30A	30	33.75	857.25	2
FAR-400-32A	32	36.00	914.40	2
FAR-400-34A	34	38.00	965.20	2
FAR-400-36A	36	40.25	1022.35	2
FAR-400-38A	38	40.75	1035.05	2
FAR-400-40A	40	43.00	1092.20	2
FAR-400-42A	42	45.00	1143.00	2
FAR-400-44A	44	47.25	1200.15	2
FAR-400-46A	46	49.50	1257.30	2
FAR-400-48A	48	51.50	1308.10	2
FAR-400-50A	50	53.62	1361.95	2

# FAR Series

Self-Adhesive Flange Protectors – Raised Face (cont.)

Caplug No.	Dimensions			Packaging
	Nominal Pipe Size	A		Minimum Sales Quantity
		In	mm	
<b>26" to 50" Class Pressure Rating B 400 Flanges</b>				
FAR-400-26B	26	28.00	711.20	2
FAR-400-28B	28	30.00	762.00	2
FAR-400-30B	30	32.25	819.15	2
FAR-400-32B	32	34.38	873.25	2
FAR-400-34B	34	36.50	927.10	2
FAR-400-36B	36	38.62	980.95	2
FAR-400-38B	38	40.75	1035.05	2
FAR-400-40B	40	43.00	1092.20	2
FAR-400-42B	42	45.00	1143.00	2
FAR-400-44B	44	47.25	1200.15	2
FAR-400-46B	46	49.50	1257.30	2
FAR-400-48B	48	51.50	1308.10	2
FAR-400-50B	50	53.62	1361.95	2
<b>26" to 48" Class Pressure Rating A 600 Flanges</b>				
FAR-600-26A	26	29.50	749.30	2
FAR-600-28A	28	31.50	800.10	2
FAR-600-30A	30	33.75	857.25	2
FAR-600-32A	32	36.00	914.40	2
FAR-600-34A	34	38.00	965.20	2
FAR-600-36A	36	40.25	1022.35	2
FAR-600-38A	38	41.50	1054.10	2
FAR-600-40A	40	43.75	1111.25	2
FAR-600-42A	42	46.00	1168.40	2
FAR-600-44A	44	48.25	1225.55	2
FAR-600-46A	46	50.25	1276.35	2
FAR-600-48A	48	52.50	1333.50	2
<b>26" to 48" Class Pressure Rating B 600 Flanges</b>				
FAR-600-26B	26	28.62	726.95	2
FAR-600-28B	28	30.88	784.35	2
FAR-600-30B	30	33.12	841.25	2
FAR-600-32B	32	35.25	895.35	2
FAR-600-34B	34	37.50	952.50	2
FAR-600-36B	36	39.75	1009.65	2
FAR-600-38A	38	41.50	1054.10	2
FAR-600-40B	40	43.75	1111.25	2
FAR-600-42B	42	46.00	1168.40	2
FAR-600-44B	44	48.25	1225.55	2
FAR-600-46B	46	50.25	1276.35	2
FAR-600-48B	48	52.50	1333.50	2
<b>26" to 46" Class Pressure Rating A 900 Flanges</b>				
FAR-900-26A	26	29.50	749.30	2
FAR-900-28A	28	31.50	800.10	2
FAR-900-30A	30	33.75	857.25	2
FAR-900-32A	32	36.00	914.40	2
FAR-900-34A	34	38.00	965.20	2
FAR-900-36A	36	40.25	1022.35	2
FAR-900-38A	38	43.25	1098.55	2
FAR-900-40A	40	45.75	1162.05	2
FAR-900-42A	42	47.75	1212.85	2
FAR-900-44A	44	50.00	1270.00	2
FAR-900-46A	46	52.50	1333.50	2
<b>26" to 46" Class Pressure Rating B 900 Flanges</b>				
FAR-900-26B	26	30.00	762.00	2
FAR-900-28B	28	32.25	819.15	2
FAR-900-30B	30	34.50	876.30	2
FAR-900-32B	32	36.50	927.10	2
FAR-900-34B	34	39.00	990.60	2
FAR-900-36B	36	40.50	1028.70	2
FAR-900-38B	38	43.25	1098.55	2
FAR-900-40B	40	45.75	1162.05	2
FAR-900-42B	42	47.75	1212.85	2
FAR-900-44B	44	50.00	1270.00	2
FAR-900-46B	46	52.50	1333.50	2

*FAR Series continues on next page*

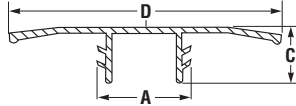
# EPN-305 Series Push-in Protectors



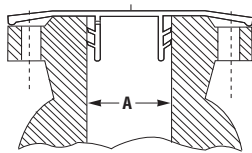
EPN flange protectors are the most universal on the market. The EPN-305 series offers a versatile design allowing it to be used on a variety of differently sized flanges. These protectors are also able to be used on a variety of flange classifications, allowing our customers to eliminate excess inventory.



**Material:** Linear Low-Density Polyethylene **Color\*:** Yellow **Meets:** ANSI B 16.5 DIN 2627-2638



Caplug No.	Nominal Pipe Size	Dimensions						Packaging	
		A		C		D		Carton Quantity	Mini Pak Quantity
	In	In	mm	In	mm	In	mm		
EPN 305-0375	3/8	.55	13.97	.59	14.99	3.39	86.11	1000	n/a
EPN 305-0500	1/2	.75	19.05	.59	14.99	3.54	89.92	1000	n/a
EPN 305-0750	3/4	.94	23.88	.59	14.99	3.94	100.08	700	n/a
EPN 305-1	1	1.18	29.97	.79	20.07	4.33	109.98	500	n/a
EPN 305-1250	1-1/4	1.54	39.12	.79	20.07	5.35	135.89	300	n/a
EPN 305-1500	1-1/2	1.77	44.96	.79	20.07	5.75	146.05	250	n/a
EPN 305-2	2	2.20	55.88	.79	20.07	6.30	160.02	200	n/a
EPN 305-2500	2-1/2	2.83	71.88	.79	20.07	7.09	180.09	200	n/a
EPN 305-3	3	3.35	85.09	.98	24.89	7.72	196.09	150	n/a
EPN 305-4	4	4.29	108.97	.98	24.89	8.50	215.90	100	n/a
EPN 305-5	5	5.28	134.11	.98	24.89	9.69	246.13	75	n/a
EPN 305-6	6	6.34	161.04	1.38	35.05	11.02	279.91	40	n/a
EPN 305-8	8	8.27	210.06	1.38	35.05	13.23	336.04	40	n/a
EPN 305-10	10	10.31	261.87	1.57	39.88	15.35	389.89	28	n/a
EPN 305-12	12	12.52	318.01	1.89	48.01	17.72	450.09	20	n/a
EPN 305-16	16	16.14	409.96	2.44	61.98	22.83	579.88	10	n/a



Caplug No.	Nominal Pipe Size	A				ANSI B 16.5/BS 1560					DIN 2627-2638/BS 4504									
		Minimum		Maximum		Cl. 150-300	Cl. 400	Cl. 600	Cl. 900	Cl. 1500	Cl. 2500	PN 10-16	PN 25-40	PN 64	PN 100	PN 160	PN 250	PN 300	PN-400	
		In	mm	In	mm															
EPN 305-0375	3/8	.35	8.89	.54	13.72	X	X	X	X	X	X	X	X	X	X	X	X	X	X	X
EPN 305-0500	1/2	.52	13.21	.68	17.27	X	X	X	X	X	X	X	X	X	X	X	X	X	X	X
EPN 305-0750	3/4	.77	19.56	.88	22.35	X	X	X	X	X	X	X	X	X	X	X	X	X	X	X
EPN 305-1	1	.95	24.13	1.12	28.45	X	X	X	X	X	X	X	X	X	X	X	X	X	X	X
EPN 305-1250	1-1/4	1.18	29.97	1.46	37.08	X	X	X	X	X	X	X	X	X	X	X	X	X	X	X
EPN 305-1500	1-1/2	1.49	37.85	1.70	43.18	X	X	X	X	X	X	X	X	X	X	X	X	X	X	X
EPN 305-2	2	1.89	48.01	2.15	54.61	X	X	X	X	X	X	X	X	X	X	X	X	X	X	X
EPN 305-2500	2-1/2	2.50	63.50	2.77	70.36	X	X	X	X	X	X	X	X	X	X	X	X	X	X	X
EPN 305-3	3	2.99	75.95	3.25	82.55	X	X	X	X	X	X	X	X	X	X	X	X	X	X	X
EPN 305-4	4	3.82	97.03	4.22	107.19	X	X	X	X	X	X	X	X	X	X	X	X	X	X	X
EPN 305-5	5	4.65	118.11	5.19	131.83	X	X	X	X	X	X	X	X	X	X	X	X	X	X	X
EPN 305-6	6	5.83	148.08	6.26	159.00	X	X	X	X	X	X	X	X	X	X	X	X	X	X	X
EPN 305-8	8	7.24	183.90	8.19	208.03	X	X	X	X	X	X	X	X	X	X	X	X	X	X	X
EPN 305-10	10	9.37	238.00	10.25	260.35	X	X	X	X	X	X	X	X	X	X	X	X	X	X	X
EPN 305-12	12	11.22	284.99	12.40	314.96	X	X	X	X	X	X	X	X	X	X	X	X	X	X	X
EPN 305-16	16	13.98	355.09	16.06	407.92	X	X	X	X	X	X	X	X	X	X	X	X	X	X	X

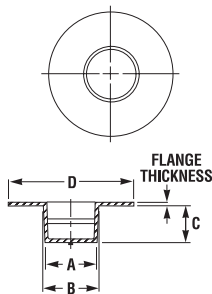
## VALVE FLANGE PROTECTORS



These protectors have a tapered body and wide flange to protect the entire machined surface of valve flange. Use these flange protectors to seal out dirt and contaminants or as a paint mask. These protectors only fit 40 flange bore for a schedule 40 pipe.

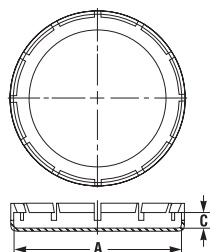


**Material:** Low-Density Polyethylene **Color\*:** Orange



Caplug No.	Nominal Size	Flange Thickness	Dimensions				Packaging	
			A	B	C	D	Carton Quantity	Mini Pak Quantity
	In	In	In	In	In	In		
109	1/2	.25	.540	.585	.500	1.440	4000	800
110	3/4	.03	.720	.750	.500	1.688	2500	500
111	1	.03	.940	.970	.625	2.000	800	160
112	1-1/4	.04	1.360	1.400	.625	3.560	500	100
113	1-1/2	.04	1.600	1.640	.750	2.875	500	100
114	2	.05	2.040	2.100	.750	3.625	250	50
115	2-1/2	.05	2.440	2.500	.750	4.125	250	50
115-1	2-1/2	.05	2.440	2.500	.750	5.125	700	140
116	3	.05	3.014	3.150	.730	6.050	400	80
117	3-1/2	.06	3.520	3.580	.750	5.590	450	90
118	4	.06	4.000	4.140	.980	6.310	250	50
119	5	.06	5.020	5.080	1.000	7.312	200	40
120	6	.06	6.040	6.100	1.000	8.500	150	30

## EPN-310 Series Outside Fitting Protectors



This full-face flange protector is quick and easy to install and remove. Just push the cover onto the flange and it will wrap around to protect the face and sides of the flange. EPN-310 protectors also offer easier removal than any other full-face wrap-around protector in the industry. Its unique style is ideal for coated and conical bore flanges.

**Material:** Linear Low-Density Polyethylene **Color\*:** Yellow



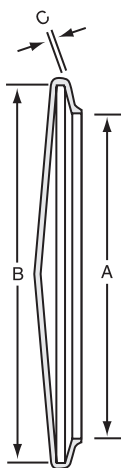
Caplug No.	To Cover Flange Sizes (In)	Dimensions				Packaging	
		A		C		Carton Quantity	Mini Pak Quantity
		In	mm	In	mm		
EPN 310-0500A	150-1/2	3.50	88.90	.56	14.22	250	n/a
EPN 310-0750A	150-3/4	3.88	98.55	.62	15.75	200	n/a
EPN 310-1A	150-1	4.25	107.95	.69	17.53	150	n/a
EPN 310-1500A	150-1-1/2	5.00	127.00	.81	20.57	175	n/a
EPN 310-2A	150-2	6.00	152.40	.87	22.10	100	n/a
EPN 310-3A	150-3	7.50	190.50	1.06	26.92	60	n/a
EPN 310-4A	150-4	9.00	228.60	1.10	27.94	40	n/a
EPN 310-6A	150-6	11.00	279.40	1.14	28.96	25	n/a
EPN 310-10A	150-10	16.00	406.40	1.18	29.97	20	n/a
EPN 310-0500B	300-1/2	3.74	95.00	.67	17.02	200	n/a
EPN 310-1B	300-1	4.88	123.95	.81	20.57	175	n/a
EPN 310-2B	300-2	6.50	165.10	.83	21.08	100	n/a
EPN 310-0500C	600-1/2	3.74	95.00	.67	17.02	200	n/a
EPN 310-1C	600-1	4.88	123.95	.81	20.57	175	n/a

## VF Series Vinyl Flange Covers



Series VF Vinyl Flange Covers seal out dust and moisture during shipment to protect flange surfaces. These covers are quick and easy to apply, and provide a snug fit for flanged and beaded tubes. Series VF is available in a variety of sizes.

**Material:** Vinyl **Color\*:** Yellow **Optional Colors\*:** White, Black, Brown, Orange, Red, Green, Gray, Blue



Caplug No.	Dimensions						Packaging	
	A		B		C		Carton Quantity	Mini Pak <sup>†</sup> Quantity
	In	mm	In	mm	In	mm		
VF-680	.680	17.27	1.310	33.27	.055	1.40	2000	400
VF-930	.930	23.62	1.550	39.37	.055	1.40	1500	300
VF-1000	1.000	25.40	1.620	41.14	.055	1.40	1500	300
VF-1310	1.310	33.27	1.930	49.02	.055	1.40	1000	200
VF-1500	1.500	38.10	2.195	55.75	.055	1.40	900	180
VF-2000	2.000	50.80	2.695	68.45	.055	1.40	600	120
VF-2180	2.180	55.37	2.860	72.64	.055	1.40	500	100
VF-2500	2.500	63.50	3.180	80.77	.055	1.40	400	80
VF-2930	2.930	74.42	3.560	90.42	.055	1.40	400	80
VF-3000	3.000	76.20	3.600	91.44	.055	1.40	400	80
VF-3500	3.500	88.90	4.155	105.53	.055	1.40	300	60
VF-4000	4.000	101.60	4.690	119.12	.055	1.40	250	50
VF-4250	4.250	107.95	4.940	125.47	.055	1.40	200	40
VF-4500	4.500	114.30	5.190	131.82	.055	1.40	200	40
VF-4750	4.750	120.65	5.440	138.17	.055	1.40	200	40
VF-5000	5.000	127.00	5.690	144.52	.055	1.40	100	20
VF-5250	5.250	133.35	5.940	150.87	.055	1.40	100	20
VF-5500	5.500	139.70	6.190	157.22	.055	1.40	100	20
VF-6000	6.000	152.40	6.690	169.92	.055	1.40	100	20
VF-6500	6.500	165.10	7.190	182.62	.055	1.40	100	20

<sup>†</sup> Mini Paks are available only in the standard color.

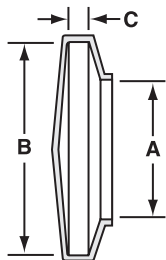
# VAS Series Vinyl American Standard Association Flange Covers



Designed to accommodate most American Standard Association, Navy and Military sizes, Series VAS Vinyl Flange Covers protect flanges by sealing out dust and moisture during shipment. Series VAS is available in a wide range of sizes.



**Material:** Vinyl **Color\*:** Yellow **Optional Colors\*:** White, Black, Brown, Orange, Red, Green, Gray, Blue



Caplug No.	Dimensions						Packaging	
	A		B		C		Carton Quantity	Mini Pak <sup>†</sup> Quantity
	In	mm	In	mm	In	mm		
VAS-3500-6	2.485	63.12	3.500	88.90	.400	10.16	250	50
VAS-3750-8	2.750	69.85	3.750	95.25	.500	12.70	200	40
VAS-3870-8	2.860	72.64	3.870	98.30	.540	13.72	200	40
VAS-4250-7	3.260	82.80	4.250	107.95	.460	11.68	200	40
VAS-4620-9	3.620	91.95	4.620	117.35	.500	12.70	100	20
VAS-4870-10	3.900	99.06	4.870	123.70	.680	17.27	100	20
VAS-5000-9	4.000	101.60	5.000	127.00	.620	15.75	100	20
VAS-5250-12	4.250	107.95	5.250	133.35	.760	19.30	100	20
VAS-6000-10	4.500	114.30	6.000	152.40	.675	17.15	100	20
VAS-6120-13	5.110	129.79	6.120	155.45	.825	20.96	100	20
VAS-6500-14	5.500	139.70	6.500	165.10	.900	22.86	80	n/a
VAS-7000-12	6.000	152.40	7.000	177.80	.800	20.32	70	n/a
VAS-7500-14	6.500	165.10	7.500	190.50	.900	22.86	60	n/a
VAS-8250-19	7.200	182.88	8.250	209.55	1.300	33.02	20	n/a
VAS-9000-15	8.030	203.96	9.000	228.60	1.000	25.40	20	n/a
VAS-10000-14	9.000	228.60	10.030	254.76	.875	22.23	20	n/a
VAS-10750-24	9.730	247.14	10.750	273.05	1.500	38.10	20	n/a
VAS-11000-16	10.050	255.27	11.000	279.40	1.000	25.40	20	n/a
VAS-12500-22	11.500	292.10	12.500	317.50	1.440	36.58	20	n/a

<sup>†</sup> Mini Paks are available only in the standard color.

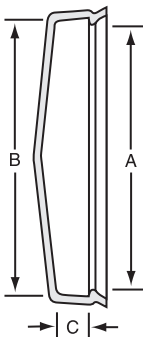
# VSR Series Vinyl Snap Ring Flange Covers



Series VSR Vinyl Snap Ring Flange Covers seal out dust and moisture during shipment to protect flange surfaces. These covers are designed to snap on easily for a snug fit. Series VSR is available in a wide range of sizes.



**Material:** Vinyl **Color\*:** Yellow **Optional Colors\*:** White, Black, Brown, Orange, Red, Green, Gray, Blue



Caplug No.	Dimensions						Packaging	
	A		B		C		Carton Quantity	Mini Pak† Quantity
	In	mm	In	mm	In	mm		
VSR-1000	.870	22.10	1.000	25.40	.375	9.53	1000	200
VSR-1150	1.050	26.67	1.150	29.21	.505	12.83	1000	200
VSR-1250	1.150	29.21	1.250	31.75	.505	12.83	1000	200
VSR-1500	1.450	36.83	1.550	39.37	.430	10.92	1000	200
VSR-1650	1.650	41.91	1.800	45.72	.505	12.83	1000	200
VSR-1750	1.700	43.18	1.800	45.72	.450	11.43	1000	200
VSR-2000	1.950	49.53	2.050	52.07	.450	11.43	1000	200
VSR-2150	2.050	52.07	2.150	54.61	.500	12.70	500	100
VSR-2250	2.150	54.61	2.280	57.91	.450	11.43	500	100
VSR-2500	2.400	60.96	2.620	66.55	.450	11.43	500	100
VSR-2750	2.650	67.31	2.800	71.12	.450	11.43	500	100
VSR-3000	2.850	72.39	3.050	77.47	.450	11.43	250	n/a
VSR-3250	3.150	80.01	3.300	83.82	.450	11.43	250	n/a
VSR-3500	3.400	86.36	3.600	91.44	.450	11.43	250	n/a
VSR-3750	3.650	92.71	3.850	97.79	.500	12.70	250	n/a
VSR-4000	3.900	99.06	4.080	103.63	.500	12.70	250	n/a
VSR-4250	4.150	105.41	4.320	109.73	.550	13.97	250	n/a
VSR-4500	4.400	111.76	4.600	116.84	.550	13.97	250	n/a
VSR-4750	4.650	118.11	4.850	123.19	.500	12.70	250	n/a
VSR-5000	4.900	124.46	5.100	129.54	.600	15.24	200	n/a
VSR-5250	5.150	130.81	5.350	135.89	.600	15.24	200	n/a
VSR-5500	5.400	137.16	5.620	142.75	.600	15.24	150	n/a
VSR-5750	5.700	144.78	5.850	148.59	.600	15.24	150	n/a
VSR-6000	5.900	149.86	6.180	156.97	.600	15.24	150	n/a
VSR-6250	6.180	156.97	6.400	162.56	.600	15.24	150	n/a
VSR-6500	6.450	163.83	6.650	168.91	.600	15.24	100	n/a
VSR-6750	6.700	170.18	6.900	175.26	.600	15.24	100	n/a
VSR-7000	6.950	176.53	7.150	181.61	.600	15.24	100	n/a
VSR-7250	7.200	182.88	7.400	187.96	.600	15.24	100	n/a
VSR-7500	7.450	189.23	7.650	194.31	.600	15.24	100	n/a
VSR-7750	7.700	195.58	7.900	200.66	.600	15.24	75	n/a
VSR-8000	7.950	201.93	8.150	207.01	.600	15.24	75	n/a
VSR-8250	8.250	209.55	8.450	214.63	.600	15.24	75	n/a
VSR-8500	8.450	214.63	8.700	220.98	.600	15.24	75	n/a
VSR-8750	8.600	218.44	8.800	223.52	.600	15.24	75	n/a
VSR-9000	8.800	223.52	9.000	228.60	.620	15.75	75	n/a
VSR-9500	9.350	237.49	9.550	242.57	.600	15.24	50	n/a
VSR-9750	9.700	246.38	10.050	255.27	.600	15.24	50	n/a
VSR-10000	9.900	251.46	10.050	255.27	.600	15.24	50	n/a
VSR-10250	10.100	256.54	10.300	261.62	.600	15.24	40	n/a
VSR-10500	10.400	264.16	10.650	270.51	.600	15.24	30	n/a
VSR-11000	10.900	276.86	11.050	280.67	.600	15.24	30	n/a
VSR-11420	11.100	281.94	11.420	290.07	.500	12.70	30	n/a
VSR-12000	11.800	299.72	12.000	304.80	.650	16.51	30	n/a
VSR-12250	12.150	308.61	12.350	313.69	.650	16.51	20	n/a
VSR-13500	13.500	342.90	13.750	349.25	.650	16.51	20	n/a
VSR-14500	14.500	368.30	14.750	374.65	.650	16.51	10	n/a

† Mini Paks are available only in the standard color.

# FLANGE PROTECTORS

## *Pressboard*

Comes in 1/8" Thickness

1/2" & UP

150# 300# 600# 900# 1500# 2500#

## *Plywood*

Standard Thickness

1/4" 3/8" 1/2"

Additional Thickness Upon Request