

TAPERED CAPS & PLUGS

T Series (Tapered Caps & Plugs)



Tapered caps can be used as either caps or plugs. Because they are tapered in design and made from highly pliable (flexible) polyethylene, they not only can be applied to fit snugly but are also readily removable. Especially recommended for use on MIL Std. and SAE-type tube and hydraulic fittings, and for threaded external and internal NPT fittings.

Material: Low-Density Polyethylene **Color*:** Red

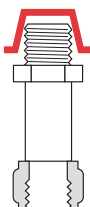


• Several parts are also stocked in green FlexTemp, a flexible thermoplastic rubber for extreme temperature applications ranging from -90°F to 300°F (-68°C to 149°C).

Selection Charts - Caps Applicable Specs.: MIL-C-5501/7 (MIL-C-52078), NAS-834

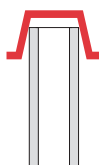
Recommended closures for tube and hydraulic fittings

Caplug No.	Fitting Size (Dash No.)	Tubing Diameter	To Fit Thread Size
T-2	-2	1/8	5/16 - 24
T-3-X	-3	3/16	3/8 - 24
T-4-X	-4	1/4	7/16 - 20
T-5	-5	5/16	1/2 - 20
T-6-X	-6	3/8	9/16 - 18
T-7	-	3/8	5/8 - 18
T-9-X	-8	1/2	3/4 - 16
IT-11-X	-10	5/8	7/8 - 14
T-13-X	-12	3/4	1-1/16 - 12
T-15-X	-16	1	1-5/16 - 12
T-18	-20	1-1/4	1-5/8 - 12
T-20	-24	1-1/2	1-7/8 - 12
T-230	-28	1-3/4	2-1/4 - 12
T-250	-32	2	2-1/2 - 12



Recommended closures for unthreaded standard weight pipe (Schedule 40)

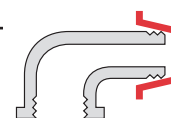
Caplug No.	Size
T-4	1/8
T-6-X	1/4
T-8-X	3/8
T-11	1/2
T-13-X	3/4
T-16	1
T-18-X	1-1/4
T-210	1-1/2
T-240	2
T-45-A	2-1/2
T-1050	3
T-1064	3-1/2
T-1072	4
T-1107	6
T-1139	8



Recommended closures for threaded external NPT fittings

Based on average tapped hole fit. It is suggested that sample Caps be tried for size before ordering in quantity.

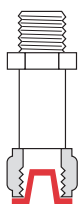
Caplug No.	NPT Size
T-4	1/8
T-6	1/4
T-8-X	3/8
T-11	1/2
T-13-X	3/4
T-15-X	1
T-18	1-1/4
T-20	1-1/2
T-240	2
T-45-A	2-1/2
T-96-A	3
T-502	3-1/2
T-1072	4
T-1086	5
T-1103	6



Selection Charts - Plugs Applicable Specs.: MIL-C-5501/7 (MIL-C-52078), NAS-834

Recommended closures for tube and hydraulic fittings

Caplug No.	Fitting Size (Dash No.)	Tubing Diameter	Thread Size
T-1	-2	1/8	5/16 - 24
T-2	-3	3/16	3/8 - 24
T-3	-4	1/4	7/16 - 20
T-4	-5	5/16	1/2 - 20
T-5	-6	3/8	9/16 - 18
T-6	-	3/8	5/8 - 18
T-8	-8	1/2	3/4 - 16
T-10	-10	5/8	7/8 - 14
T-12X	-12	3/4	1-1/16 - 12
T-14X	-16	1	1-5/16 - 12
T-17-S	-20	1-1/4	1-5/8 - 12
T-19	-24	1-1/2	1-7/8 - 12
T-221	-28	1-3/4	2-1/4 - 12
T-240	-32	2	2-1/2 - 12



Recommended closures for threaded internal NPT fittings

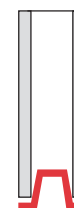
Based on average tapped hole fit. It is suggested that sample Plugs be tried for size before ordering in quantity.

Caplug No.	NPT Size
T-2X	1/8
T-4	1/4
T-6X	3/8
T-9	1/2
T-12X	3/4
T-14	1
T-17-S	1-1/4
T-20-S	1-1/2
T-24-S	2
T-44	2-1/2
T-501	3
T-502	3-1/2
T-1070	4
T-1086	5
T-1103	6

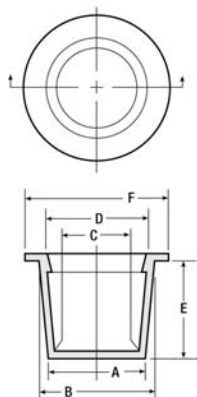


Recommended closures for unthreaded standard weight pipe (Schedule 40)

Caplug No.	Size
T-1	1/8
T-2X	1/4
T-5	3/8
T-7	1/2
T-10	3/4
T-13	1
T-16	1-1/4
T-18	1-1/2
T-220	2
T-250	2-1/2
T-53	3
T-1050	3-1/2
T-1064	4
T-1080	5
T-1097	6
T-1128	8



T Series (Tapered Caps & Plugs) cont.



When PLUGGING
 "B" Dim. must be at least 1% larger than hole to be plugged. Minimum .020".



When CAPPING
 "C" Dim. must be at least 1% smaller than diameter to be capped. Minimum .020".

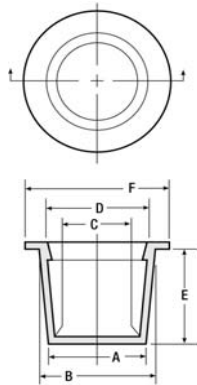
Note:
 Part numbers shown in **red italics** are also available in FlexTemp (thermoplastic rubber) Green.

Caplug No.	Dimensions										Packaging			
	A		B		C		D		E		F		Carton Quantity	Mini Pak Quantity
	In	mm	In	mm	In	mm	In	mm	In	mm	In	mm		
<i>T-00</i>	.116	2.95	.182	4.62	.053	1.35	.120	3.05	.38	9.65	.31	7.87	5000	1000
<i>T-00-S</i>	.140	3.56	.180	4.57	.088	2.24	.109	2.77	.22	5.59	.31	7.87	5000	1000
<i>T-00-X</i>	.145	3.68	.205	5.21	.079	2.01	.150	3.81	.38	9.65	.41	10.41	5000	1000
<i>T-0</i>	.173	4.39	.240	6.10	.111	2.82	.177	4.50	.38	9.65	.38	9.65	5000	1000
<i>T-0-X</i>	.184	4.67	.255	6.48	.113	2.87	.172	4.37	.38	9.65	.38	9.65	5000	1000
<i>235-V</i>	.209	5.31	.269	6.83	.150	3.81	.210	5.33	.34	8.64	.38	9.65	15000	3000
<i>235-T</i>	.210	5.33	.275	6.99	.146	3.71	.211	5.36	.34	8.64	.45	11.43	10000	2000
<i>T-1</i>	.236	5.99	.302	7.67	.174	4.42	.240	6.10	.38	9.65	.44	11.18	5000	1000
<i>T-1-X</i>	.267	6.78	.335	8.51	.205	5.21	.273	6.93	.38	9.65	.47	11.94	5000	1000
<i>T-2</i>	.299	7.59	.365	9.27	.235	5.97	.302	7.67	.38	9.65	.50	12.70	5000	1000
<i>T-2-S</i>	.325	8.26	.367	9.32	.263	6.68	.305	7.75	.19	4.83	.50	12.70	5000	1000
<i>T-2-X</i>	.330	8.38	.396	10.06	.267	6.78	.333	8.46	.38	9.65	.53	13.46	5000	1000
<i>T-3</i>	.361	9.17	.427	10.85	.298	7.57	.365	9.27	.38	9.65	.56	14.22	5000	1000
<i>T-3-X</i>	.390	9.91	.456	11.58	.327	8.31	.394	10.01	.38	9.65	.59	14.99	5000	1000
<i>T-4</i>	.419	10.64	.485	12.32	.356	9.04	.422	10.72	.38	9.65	.63	16.00	5000	1000
<i>T-4-X</i>	.447	11.35	.513	13.03	.385	9.78	.451	11.46	.38	9.65	.66	16.76	5000	1000
<i>T-5</i>	.471	11.96	.547	13.89	.409	10.39	.485	12.32	.44	11.18	.69	17.53	5000	1000
<i>189-C</i>	.477	12.12	.547	13.89	.415	10.54	.485	12.32	.31	7.87	.69	17.53	7500	1500
<i>T-5-X</i>	.500	12.70	.576	14.63	.440	11.18	.516	13.11	.44	11.18	.72	18.29	5000	1000
<i>T-5-S</i>	.533	13.54	.562	14.28	.477	12.12	.506	12.85	.22	5.59	.68	17.27	5000	1000
<i>T-6</i>	.532	13.51	.608	15.44	.468	11.89	.545	13.84	.44	11.18	.75	19.05	5000	1000
<i>T-6-X</i>	.550	13.97	.631	16.03	.487	12.37	.568	14.43	.47	11.94	.75	19.05	5000	1000
<i>T-6-S</i>	.554	14.07	.612	15.55	.490	12.45	.551	14.00	.31	7.87	.75	19.05	5000	1000
<i>T-7</i>	.580	14.73	.667	16.94	.518	13.16	.605	15.37	.50	12.70	.81	20.57	5000	1000
<i>T-7-X</i>	.610	15.49	.695	17.65	.549	13.95	.634	16.10	.50	12.70	.84	21.34	5000	1000
<i>T-8</i>	.640	16.26	.727	18.47	.578	14.68	.664	16.87	.50	12.70	.88	22.35	5000	1000
<i>T-8-S</i>	.669	16.99	.694	17.63	.613	15.57	.638	16.21	.19	4.83	.75	19.05	5000	1000
<i>T-8-X</i>	.675	17.15	.755	19.18	.613	15.57	.693	17.60	.50	12.70	.88	22.35	5000	1000
<i>T-9</i>	.690	17.53	.788	20.02	.628	15.95	.726	18.44	.56	14.22	.94	23.88	5000	1000
<i>T-9-X</i>	.725	18.42	.823	20.91	.663	16.84	.761	19.33	.56	14.22	.97	24.64	5000	1000
<i>T-9-S</i>	.740	18.80	.765	19.43	.678	17.22	.703	17.86	.19	4.83	.88	22.35	5000	1000
<i>710</i>	.750	19.05	.805	20.45	.688	17.48	.743	18.87	.19	4.83	.86	21.84	7500	1500
<i>T-10</i>	.750	19.05	.848	21.54	.687	17.45	.785	19.94	.56	14.22	1.00	25.40	5000	1000
<i>T-10S</i>	.748	19.00	.848	21.54	.687	17.45	.775	19.69	.39	9.91	1.02	25.91	5000	1000
<i>T-11</i>	.802	20.37	.911	23.14	.740	18.80	.849	21.57	.63	16.00	1.06	26.93	5000	1000
<i>T-11-X</i>	.815	20.70	.930	23.62	.753	19.13	.868	22.05	.63	16.00	1.09	27.69	5000	1000
<i>T-15-A</i>	.836	21.24	1.305	33.15	.777	19.74	1.247	31.68	1.06	26.93	1.43	36.32	2500	500
<i>T-11-S</i>	.837	21.26	.890	22.61	.757	19.23	.810	20.57	.22	5.59	1.05	26.67	5000	1000
<i>192-2-C</i>	.854	21.69	.958	24.33	.790	20.07	.894	22.71	.66	16.76	1.13	28.70	2500	500
<i>T-12</i>	.866	22.00	.975	24.77	.803	20.40	.912	23.17	.63	16.00	1.13	28.70	5000	1000
<i>192-1</i>	.869	22.07	.973	24.71	.805	20.45	.909	23.09	.75	19.05	1.13	28.70	2500	500
<i>T-12-X</i>	.915	23.24	1.040	26.42	.855	21.72	.980	24.89	.69	17.53	1.16	29.47	5000	1000
<i>249-2</i>	.950	24.13	1.090	27.69	.890	22.61	1.030	26.16	1.03	26.16	1.25	31.75	1500	300
<i>277</i>	.955	24.26	1.040	26.42	.895	22.73	.980	24.89	.50	12.70	1.16	29.46	3500	700
<i>T-13-A</i>	.960	24.38	1.047	26.59	.900	22.86	.987	25.07	.50	12.70	1.19	30.23	5000	1000
<i>T-13</i>	.964	24.49	1.090	27.69	.901	22.89	1.027	26.09	.75	19.05	1.25	31.75	2500	500
<i>249-W</i>	.975	24.77	1.104	28.04	.918	23.32	1.047	26.59	.75	19.05	1.44	36.58	2000	400
<i>T-13-X</i>	.995	25.27	1.145	29.08	.933	23.70	1.083	27.51	.75	19.05	1.31	33.28	2500	500
<i>709</i>	1.020	25.91	1.040	26.42	.940	23.88	.960	24.38	.88	22.35	1.31	33.27	1500	300
<i>T-14</i>	1.094	27.79	1.215	30.86	1.031	26.19	1.152	29.26	.75	19.05	1.41	35.82	2500	500
<i>T-16-A</i>	1.140	28.96	1.420	36.07	1.085	27.56	1.358	34.49	.81	20.57	1.56	39.63	2500	500
<i>T-14-X</i>	1.175	29.85	1.284	32.61	1.113	28.27	1.222	31.04	.63	16.00	1.44	36.58	2500	500
<i>250-SW</i>	1.175	29.85	1.284	32.61	1.113	28.27	1.222	31.04	.66	16.76	1.67	42.42	2000	400
<i>250</i>	1.179	29.95	1.286	32.66	1.115	28.32	1.222	31.04	.75	19.05	1.44	36.58	1500	300
<i>T-15</i>	1.224	31.09	1.355	34.42	1.161	29.49	1.292	32.82	.75	19.05	1.50	38.10	2500	500
<i>T-15-X</i>	1.235	31.37	1.360	34.55	1.173	29.80	1.298	32.97	.81	20.57	1.50	38.10	2500	500
<i>T-17-A</i>	1.239	31.47	1.507	38.28	1.169	29.69	1.437	36.50	.75	19.05	1.63	41.40	2500	500
<i>1153</i>	1.276	32.41	1.312	33.32	1.155	29.32	1.190	32.23	.56	14.20	1.38	35.05	2000	400
<i>T-15-S</i>	1.285	32.64	1.346	34.19	1.227	31.17	1.288	32.72	.38	9.65	1.47	37.34	5000	1000
<i>252</i>	1.292	32.82	1.356	34.44	1.231	31.27	1.295	32.89	.75	19.05	1.50	38.10	1500	330
<i>T-16</i>	1.312	33.33	1.465	37.21	1.249	31.73	1.402	35.61	.88	22.35	1.63	41.40	2500	500
<i>253</i>	1.312	33.32	1.465	37.21	1.248	31.70	1.401	35.59	.75	19.05	1.62	41.15	1500	300
<i>253-2</i>	1.344	34.14	1.507	38.28	1.282	32.56	1.445	36.70	.94	23.88	1.77	44.96	1000	200
<i>253-S</i>	1.350	34.29	1.465	37.21	1.286	32.66	1.401	35.59	.53	13.46	1.62	41.15	2000	400
<i>T-16-S</i>	1.395	35.43	1.465	37.21	1.345	34.16	1.405	35.69	.39	9.91	1.59	40.39	1000	200
<i>727</i>	1.435	36.45	1.500	38.10	1.340	34.04	1.420	36.07	.80	20.32	1.75	44.45	1000	200
<i>T-20-A</i>	1.440	36.58	1.895	48.13	1.378	35.00	1.833	46.56	1.28	32.51	2.06	52.33	1000	200
<i>T-17</i>	1.447	36.76	1.600	40.64	1.384	35.15	1.537	39.04	.88	22.35	1.75	44.45	1000	200
<i>254-S</i>	1.447	36.75	1.600	40.64	1.384	35.15	1.537	39.04	.94	23.88	1.75	44.45	1000	200
<i>254</i>	1.451	36.86	1.601	40.67	1.387	35.23	1.537	39.04	.75	19.05	1.75	44.45	1000	200
<i>T-17-S</i>	1.513	38.43	1.600	40.64	1.451	36.86	1.537	39.04	.50	12.70	1.75	44.45	2500	500
<i>194</i>	1.519	38.58	1.602	40.69	1.455	36.96	1.538	39.07	.75	19.05	1.75	44.45	1800	360
<i>T-18</i>	1.560	39.63	1.682	42.72	1.498	38.05	1.620	41.15	.75	19.05	1.88	47.75	1000	200
<i>195-S</i>	1.574	39.98	1.688	42.88	1.514	38.46	1.628	41.35	.62	15.75	1.88	47.75	5000	1000
<i>T-18-X</i>	1.630	41.40	1.750	44.45	1.568	39.83	1.688	42.88	.75	19.05	1.94	49.28	1000	200

T Series continues on next page

TAPERED CAPS & PLUGS

T Series (Tapered Caps & Plugs) cont.



When PLUGGING
"B" Dim. must be at least 1% larger than hole to be plugged. Minimum .020".



When CAPPING
"C" Dim. must be at least 1% smaller than diameter to be capped. Minimum .020".

Caplug No.	Dimensions												Packaging	
	A		B		C		D		E		F		Carton Quantity	Mini Pak Quantity
	In	mm	In	mm	In	mm	In	mm	In	mm	In	mm		
255	1.633	41.48	1.750	44.45	1.569	39.85	1.690	42.93	.75	19.05	1.84	46.74	1000	200
1972	1.720	43.69	1.850	46.99	1.664	42.27	1.794	45.57	.75	19.05	2.03	51.56	3500	700
T-21-A	1.738	44.15	2.163	54.94	1.668	42.37	2.093	53.16	1.18	29.97	2.31	58.68	1000	200
T-19	1.750	44.45	1.880	47.75	1.688	42.88	1.818	46.18	.75	19.05	2.00	50.80	1000	200
T-20	1.780	45.21	1.950	49.53	1.718	43.64	1.888	47.96	1.00	25.40	2.13	54.10	1000	200
T-20-S	1.781	45.24	1.805	45.85	1.722	43.74	1.746	44.35	.38	9.65	2.00	50.80	1000	200
206	1.807	45.90	1.938	49.23	1.743	44.27	1.874	47.60	1.00	25.40	2.16	54.86	1000	200
T-210	1.844	46.84	2.000	50.80	1.781	45.24	1.938	49.23	1.00	25.40	2.13	54.10	1000	200
911	1.865	47.37	1.975	50.17	1.785	45.34	1.895	48.13	.67	17.02	2.38	60.45	2500	500
T-21	1.900	48.26	2.076	52.73	1.837	46.66	2.013	51.13	1.00	25.40	2.25	57.15	1000	200
T-22-A	1.935	49.15	2.310	58.68	1.875	47.63	2.255	57.28	.85	21.59	2.47	62.74	1000	200
806	1.950	49.53	2.065	52.45	1.885	47.88	2.000	50.80	.75	19.05	2.20	55.88	2500	500
T-220	1.975	50.17	2.132	54.15	1.913	48.59	2.070	52.58	1.00	25.40	2.25	57.15	1000	200
T-22-S	2.015	51.18	2.147	54.54	1.953	49.61	2.085	52.96	.75	19.05	2.31	58.68	1000	200
258-S	2.020	51.31	2.100	53.34	2.060	52.32	2.140	54.36	.38	9.65	2.59	65.79	1000	200
T-221	2.067	52.50	2.243	56.97	2.005	50.93	2.181	55.40	1.00	25.40	2.44	61.98	1000	200
T-25-A	2.125	53.98	2.406	61.11	2.063	52.40	2.344	59.54	1.00	25.40	2.53	64.26	1000	200
T-230	2.136	54.26	2.312	58.73	2.074	52.68	2.250	57.15	1.00	25.40	2.56	65.03	1000	200
T-24-S	2.230	56.64	2.260	57.41	2.168	55.07	2.198	55.83	.50	12.70	2.50	63.50	1000	200
1230	2.280	57.91	2.400	60.96	2.216	56.29	2.336	59.33	.75	19.05	2.80	71.12	1500	300
T-240	2.298	58.37	2.464	62.59	2.235	56.77	2.401	60.99	1.00	25.40	2.63	66.80	500	100
708	2.300	58.42	2.464	62.59	2.220	56.39	2.383	60.53	.75	19.05	2.66	67.56	2000	400
T-33-A	2.307	58.60	2.650	67.31	2.245	57.03	2.588	65.74	1.25	31.75	2.78	70.61	500	100
265	2.311	58.70	2.650	67.31	2.247	57.07	2.586	65.68	1.00	25.40	2.78	70.61	500	100
T-250	2.395	60.84	2.602	66.09	2.333	59.26	2.540	64.52	1.03	26.16	2.81	71.38	500	100
263	2.396	60.86	2.604	66.14	2.332	59.23	2.540	64.52	1.16	29.46	2.81	71.37	500	100
T-43-A	2.457	62.41	2.750	69.85	2.395	60.84	2.688	68.28	1.00	25.40	2.88	73.15	500	100
T-33-A1	2.480	62.99	2.644	67.16	2.418	61.42	2.582	65.59	.63	16.00	2.78	70.61	1000	200
T-43-X	2.555	64.90	2.690	68.33	2.493	63.32	2.628	66.75	.63	16.00	2.88	73.15	1000	200
267	2.561	65.05	2.690	68.33	2.497	63.42	2.626	66.70	.75	19.05	2.88	73.15	500	100
T-44	2.641	67.08	2.790	70.87	2.579	65.51	2.728	69.29	.75	19.05	2.94	74.68	500	100
2156	2.655	67.44	2.788	70.82	2.595	65.91	2.728	69.29	.50	12.70	2.97	75.44	1000	200
862	2.706	68.73	2.870	72.90	2.626	66.70	2.790	70.87	.72	18.29	3.06	77.72	500	100
208	2.720	69.09	2.990	75.95	2.656	67.46	2.926	74.32	1.00	25.40	3.13	79.50	500	100
T-45-A	2.760	70.11	2.990	75.95	2.685	68.20	2.947	74.86	1.00	25.40	3.13	79.51	500	100
T-500	2.849	72.37	2.980	75.69	2.787	70.79	2.918	74.12	.75	19.05	3.25	82.55	500	100
T-53	2.975	75.57	3.103	78.82	2.915	74.04	3.041	77.24	.75	19.05	3.34	84.84	500	100
T-55-A	2.982	75.75	3.245	82.43	2.912	73.97	3.175	80.65	1.00	25.40	3.38	85.86	500	100
228	2.996	76.10	3.159	80.24	2.916	74.07	3.079	78.21	.47	11.94	3.41	86.61	500	100
T-57-A	3.090	78.49	3.370	85.60	3.020	76.71	3.300	83.82	1.00	25.40	3.50	88.90	500	100
T-96-A	3.270	83.06	3.562	90.48	3.200	81.28	3.492	88.70	1.13	28.70	3.69	93.73	250	50
T-501	3.325	84.46	3.457	87.81	3.245	82.43	3.377	85.78	.75	19.05	3.63	92.21	250	50
T-1050	3.470	88.14	3.600	91.44	3.410	86.62	3.540	89.92	.75	19.05	3.88	98.56	500	100
T-1051	3.550	90.17	3.730	94.75	3.480	88.40	3.660	92.97	1.00	25.40	4.00	101.60	250	50
T-1052	3.680	93.48	3.800	96.52	3.610	91.70	3.730	94.75	.75	19.05	4.00	101.60	250	50
T-502	3.790	96.27	3.920	99.57	3.710	94.24	3.840	97.54	.75	19.05	4.12	104.65	250	50
T-1063	3.930	99.83	4.070	103.38	3.860	98.05	4.000	101.60	.75	19.05	4.38	111.26	250	50
T-1064	4.020	102.11	4.140	105.16	3.940	100.08	4.070	103.38	.75	19.05	4.53	115.07	250	50
T-1067	4.090	103.89	4.320	109.73	4.010	101.86	4.240	107.70	1.25	31.75	4.62	117.35	250	50
406	4.214	107.04	4.459	113.26	4.134	105.00	4.379	111.23	1.00	25.40	4.94	125.48	400	80
T-1070	4.270	108.46	4.430	112.53	4.180	106.18	4.340	110.24	.88	22.35	4.88	123.96	250	50
T-1072	4.370	111.00	4.620	117.35	4.290	108.97	4.540	115.32	1.00	25.40	5.00	127.01	250	50
T-1076	4.640	117.86	4.850	123.19	4.570	116.08	4.780	121.42	.88	22.35	5.25	133.36	250	50
T-1078	4.790	121.67	4.970	126.24	4.710	119.64	4.890	124.21	1.00	25.40	5.38	136.66	250	50
T-1079	4.910	124.72	5.090	129.29	4.830	122.69	5.010	127.26	1.00	25.40	5.50	139.71	250	50
407	4.980	126.49	5.100	129.54	4.900	124.46	5.020	127.51	.69	17.53	5.44	138.18	450	90
T-1080	4.990	126.75	5.200	132.09	4.920	124.97	5.100	129.55	1.00	25.40	5.63	143.01	250	50
T-1084	5.180	131.58	5.360	136.15	5.110	129.80	5.290	134.37	1.00	25.40	5.88	149.36	250	50
T-1086	5.330	135.39	5.490	139.45	5.210	132.34	5.370	136.40	.88	22.35	5.88	149.36	250	50
T-1088	5.470	138.94	5.620	142.75	5.390	136.91	5.540	140.72	1.00	25.40	6.13	155.71	250	50
T-1090	5.570	141.48	5.750	146.06	5.490	139.45	5.670	144.02	1.00	25.40	6.19	157.23	250	50
T-1092	5.700	144.79	5.870	149.10	5.610	142.50	5.790	147.07	.98	24.89	6.25	158.76	250	50
T-1097	6.010	152.66	6.180	156.98	5.920	150.37	6.100	154.95	1.00	25.40	6.62	168.15	250	50
T-1100	6.180	156.98	6.350	161.30	6.090	154.69	6.260	159.01	1.00	25.40	6.75	171.46	100	20
T-1103	6.400	162.57	6.560	166.63	6.330	160.79	6.490	164.85	.87	22.10	6.94	176.28	100	20
T-1107	6.610	167.90	6.710	170.44	6.530	165.87	6.630	168.41	1.50	38.10	7.19	182.63	100	20
365	6.668	169.37	6.774	172.06	6.562	166.67	6.668	169.37	1.50	38.10	7.19	182.63	100	20
T-1108S	6.880	174.75	7.030	178.56	6.800	172.72	6.950	176.53	.50	12.70	7.67	194.82	100	20
T-1108X	6.943	176.22	7.358	186.75	6.851	173.88	7.264	184.37	1.46	37.03	7.72	195.94	80	16
T-1109	7.050	179.08	7.120	180.86	6.970	177.04	7.060	179.33	1.00	25.40	7.63	193.81	100	20
T-1110	7.340	186.44	7.650	194.32	7.260	184.41	7.560	192.03	1.00	25.40	7.94	201.68	100	20
T-1120	7.660	194.57	7.840	199.14	7.580	192.54	7.760	197.11	1.00	25.40	8.12	206.26	100	20
T-1128	7.970	202.45	8.140	206.76	7.880	200.16	8.050	204.48	1.00	25.40	8.38	212.86	100	20
T-1133	8.150	207.02	8.350	212.10	8.050	204.48	8.250	209.56	1.38	35.05	8.75	222.26	50	10
T-1137	8.400	213.37	8.600	218.45	8.300	210.83	8.500	215.91	1.38	35.05	9.00	228.61	50	10
T-1139	8.670	220.23	8.730	221.75	8.550	217.18	8.600	218.45	1.50	38.10	9.13	231.91	50	10
T-1142	9.060	230.12	9.364	237.85	8.890	225.81	9.240	234.70	1.75	44.45	9.86	250.44	50	10
390	9.970	253.24	10.220	259.59	9.820	249.43	10.080	256.03	.97	24.64	10.56	268.22	75	15
T-1143	10.790	274.07</												

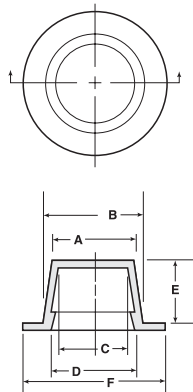
W Series (Tapered Caps & Plugs with Wide Flanges)



Featuring a wider flange than standard tapered caps, Series W offers added protection for bearing surfaces and cannot be accidentally pushed all the way into or through an opening being plugged.



Material: Low-Density Polyethylene **Color*:** Red



Caplug No.	Dimensions												Packaging	
	A		B		C		D		E		F		Carton Quantity	Mini Pak Quantity
	In	mm	In	mm	In	mm	In	mm	In	mm	In	mm		
W-0	.173	4.39	.240	6.10	.111	2.82	.177	4.50	.38	9.65	.56	14.22	5000	1000
W-1	.240	6.10	.315	8.00	.183	4.65	.245	6.22	.36	9.14	.62	15.75	5000	1000
W-2	.302	7.67	.375	9.53	.240	6.10	.303	7.70	.38	9.65	.69	17.53	5000	1000
W-3	.360	9.14	.425	10.80	.298	7.57	.363	9.22	.38	9.65	.75	19.05	5000	1000
W-4	.425	10.80	.480	12.19	.363	9.22	.418	10.62	.38	9.65	.81	20.57	5000	1000
W-5	.472	11.99	.540	13.72	.410	10.41	.478	12.14	.44	11.18	.88	22.35	5000	1000
W-6	.536	13.61	.615	15.62	.474	12.04	.553	14.05	.44	11.18	.94	23.88	5000	1000
W-7	.590	14.99	.670	17.02	.528	13.41	.608	15.44	.50	12.70	1.00	25.40	5000	1000
W-8	.643	16.33	.726	18.44	.581	14.76	.662	16.82	.50	12.70	1.03	26.16	5000	1000
W-9	.683	17.35	.785	19.94	.621	15.77	.723	18.36	.53	13.46	1.13	28.70	5000	1000
W-10	.765	19.43	.865	21.97	.703	17.86	.803	20.40	.56	14.22	1.19	30.23	5000	1000
W-11	.820	20.83	.930	23.62	.758	19.25	.868	22.05	.59	14.99	1.25	31.75	5000	1000
W-12	.872	22.15	.977	24.82	.810	20.57	.916	23.27	.59	14.99	1.31	33.28	2500	500
W-13	.975	24.77	1.104	28.04	.913	23.19	1.042	26.47	.72	18.29	1.44	36.58	2500	500
W-14	1.158	29.41	1.275	32.39	1.096	27.84	1.213	30.81	.72	18.29	1.56	39.63	2500	500
W-14X	1.175	29.85	1.284	32.61	1.120	28.45	1.229	31.22	.63	16.00	1.67	42.42	2500	500
W-15	1.243	31.57	1.375	34.93	1.181	30.00	1.313	33.35	.72	18.29	1.69	42.93	2500	500
W-16	1.312	33.33	1.475	37.47	1.250	31.75	1.413	35.89	.88	22.35	1.81	45.98	1000	200
W-16X	1.517	38.53	1.600	40.64	1.432	36.37	1.514	38.46	.49	12.34	2.26	57.30	2000	400
W-17	1.455	36.96	1.615	41.02	1.393	35.38	1.553	39.45	.72	18.29	1.94	49.28	1000	200
W-18	1.575	40.01	1.685	42.80	1.513	38.43	1.623	41.23	.69	17.53	2.00	50.80	1000	200
W-19	1.735	44.07	1.900	48.26	1.673	42.50	1.838	46.69	.72	18.29	2.22	56.39	1000	200
W-20	1.810	45.98	1.950	49.53	1.748	44.40	1.888	47.96	.69	17.53	2.31	58.68	1000	200
W-21	1.945	49.40	2.100	53.34	1.883	47.83	2.038	51.77	.69	17.53	2.44	61.98	1000	200



When CAPPING
"C" Dim. must be at least 1% smaller than diameter to be capped. Minimum .020"



When PLUGGING
"B" Dim. must be at least 1% larger than hole to be plugged. Minimum .020"

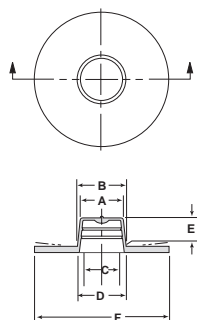
WWX Series (Tapered Caps & Plugs with Extra-Wide, Extra-Thick Flanges)



The extra-wide flange of the WWX Series provides extended visibility. This dummy-proof design prevents the mating component from being installed without first removing the cap. Available in 13 sizes, this versatile part may easily be used as a cap or plug, depending on application.



Material: Low-Density Polyethylene **Color:** Yellow



Caplug No.	Dimensions												Packaging	
	A		B		C		D		E		F		Carton Quantity	Mini Pak Quantity
	In	mm	In	mm	In	mm	In	mm	In	mm	In	mm		
WWX-8	.628	15.95	.725	18.42	.566	14.38	.643	16.33	.44	11.18	2.23	56.64	1000	200
WWX-10	.755	19.18	.870	22.10	.686	17.42	.788	20.02	.50	12.70	2.37	60.20	1000	200
WWX-12	.867	22.02	.975	24.77	.798	20.27	.889	22.58	.56	14.22	2.48	62.99	1000	200
WWX-13	.984	24.99	1.105	28.07	.909	23.09	1.014	25.76	.66	16.76	2.61	66.29	1000	200
WWX-14	1.110	28.20	1.253	31.83	1.046	26.57	1.171	29.74	.66	16.76	2.73	69.34	500	100
WWX-15	1.237	31.42	1.382	35.10	1.171	29.74	1.291	32.79	.66	16.76	2.88	73.15	800	160
WWX-16	1.312	33.32	1.465	37.21	1.243	31.57	1.375	34.93	.66	16.76	2.97	75.44	800	160
WWX-17	1.452	36.88	1.603	40.72	1.387	35.23	1.519	38.58	.66	16.76	3.10	78.74	700	140
WWX-18	1.580	40.13	1.714	43.54	1.513	38.43	1.624	41.25	.66	16.76	3.21	81.53	700	140
WWX-21	1.927	48.95	2.058	52.27	1.867	47.42	1.973	50.11	.66	16.76	3.56	90.42	600	120
WWX-230	2.120	53.85	2.290	58.17	2.036	51.71	2.210	56.13	1.00	25.40	3.79	96.27	300	60
WWX-250	2.395	60.83	2.602	66.09	2.322	58.98	2.530	64.26	1.13	28.70	4.10	104.14	200	40
WWX-44	2.638	67.01	2.795	70.99	2.547	64.69	2.670	67.82	1.13	28.70	4.26	108.20	200	40

TAPERED CAPS & PLUGS

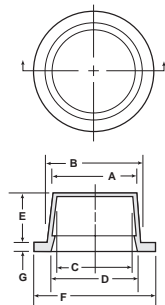
WW Series (Tapered Caps & Plugs with Wide, Thick Flanges)



Accepted by the aircraft industry, Series WW Caps are designed with a wide, thick flange to ensure against being erroneously forced "all the way through" when used as a plug. Available in 76 sizes, this versatile part may easily be used as a cap or plug, depending upon application.



Material: Low-Density Polyethylene **Color*:** Yellow **Applicable Spec:** NAS 816



When CAPPING
"C" Dim. must be at least 1% smaller than diameter to be capped. Minimum .020"



When PLUGGING
"B" Dim. must be at least 1% larger than hole to be plugged. Minimum .020"

Caplug No.	Dimensions														Packaging	
	A		B		C		D		E		F		G		Carton Quantity	Mini Pak Quantity
	In	mm	In	mm	In	mm	In	mm	In	mm	In	mm	In	mm		
WW-00	.116	2.95	.182	4.62	.053	1.35	.120	3.05	.37	9.40	.50	12.70	.090	2.29	5000	1000
WW-0	.173	4.39	.240	6.10	.111	2.82	.177	4.50	.37	9.40	.56	14.22	.090	2.29	5000	1000
WW-0X	.230	5.84	.275	6.99	.149	3.78	.190	4.83	.31	7.87	.56	14.22	.060	1.52	10000	2000
WW-1	.236	5.99	.296	7.52	.174	4.42	.225	5.72	.31	7.87	.62	15.75	.090	2.29	5000	1000
WW-2	.299	7.59	.365	9.27	.235	5.97	.302	7.67	.31	7.87	.68	17.27	.090	2.29	5000	1000
WW-2X	.333	8.46	.392	9.96	.269	6.83	.319	8.10	.31	7.87	.72	18.29	.090	2.29	5000	1000
WW-3	.367	9.32	.418	10.62	.298	7.57	.354	8.99	.31	7.87	.75	19.05	.090	2.29	5000	1000
WW-3X	.397	10.08	.447	11.35	.328	8.33	.383	9.73	.31	7.87	.78	19.81	.090	2.29	5000	1000
WW-4	.427	10.85	.475	12.07	.356	9.04	.409	10.39	.31	7.87	.81	20.57	.090	2.29	5000	1000
WF 9	.435	11.05	.509	12.93	.365	9.27	.450	11.43	.47	11.94	.83	21.08	-	-	10000	2000
WF 9-2	.460	11.68	.500	12.70	.396	10.06	.444	11.28	.38	9.65	.75	19.05	-	-	6000	1200
WW-5	.481	12.22	.547	13.89	.409	10.39	.493	12.52	.37	9.40	.87	22.10	.090	2.29	5000	1000
WW-5X	.500	12.70	.563	14.30	.440	11.18	.500	12.70	.37	9.40	.89	22.61	.090	2.29	5000	1000
WW-6	.530	13.46	.615	15.62	.468	11.89	.547	13.89	.37	9.40	.94	23.88	.090	2.29	5000	1000
WF11-2	.560	14.22	.631	16.03	.497	12.62	.579	14.71	.47	11.94	.97	24.64	-	-	6500	1300
WW-7	.590	14.99	.667	16.94	.518	13.16	.605	15.37	.44	11.18	1.00	25.40	.090	2.29	5000	1000
WW-7X	.610	15.49	.687	17.45	.548	13.92	.635	16.13	.44	11.18	1.03	26.16	.090	2.29	5000	1000
WW-8	.628	15.95	.725	18.42	.558	14.17	.662	16.81	.44	11.18	1.06	26.92	.090	2.29	5000	1000
WW-8X	.658	16.71	.750	19.05	.588	14.94	.687	17.45	.44	11.18	1.09	27.69	.090	2.29	5000	1000
WW-9	.690	17.53	.775	19.69	.620	15.75	.721	18.31	.47	11.94	1.12	28.45	.090	2.29	5000	1000
WW-9X	.725	18.42	.812	20.62	.663	16.84	.761	19.33	.50	12.70	1.16	29.46	.090	2.29	5000	1000
WW-10	.755	19.18	.870	22.10	.693	17.60	.808	20.52	.50	12.70	1.18	29.97	.090	2.29	5000	1000
WW-11	.820	20.83	.930	23.62	.755	19.18	.865	21.97	.53	13.46	1.25	31.75	.090	2.29	2500	500
WW-11X	.825	20.96	.929	23.60	.763	19.38	.878	22.30	.56	14.22	1.25	31.75	.090	2.29	2500	500
WF 21	.866	22.00	.976	24.79	.804	20.42	.925	23.50	.65	16.51	1.81	45.97	-	-	2500	500
WW-12	.867	22.02	.975	24.77	.805	20.45	.913	23.19	.56	14.22	1.28	32.51	.090	2.29	2500	500
WW-12X	.915	23.24	1.035	26.29	.840	21.34	.960	24.38	.63	16.00	1.34	34.04	.090	2.29	2500	500
WW-13	.984	24.99	1.105	28.07	.919	23.34	1.040	26.42	.66	16.76	1.44	36.58	.090	2.29	2500	500
WW-13B	1.094	27.79	1.215	30.86	1.031	26.19	1.132	28.75	.69	17.53	1.56	39.62	.090	2.29	2500	500
WW-14	1.110	28.19	1.233	31.32	1.043	26.49	1.157	29.39	.66	16.76	1.56	39.62	.090	2.29	2500	500
WW-14X	1.150	29.21	1.284	32.61	1.108	28.14	1.205	30.61	.66	16.76	1.56	39.62	.090	2.29	2500	500
WF 24-2	1.150	29.21	1.284	32.61	1.080	27.43	1.220	30.99	.75	19.05	1.56	39.62	-	-	1500	300
WF 25	1.180	29.97	1.314	33.38	1.115	28.32	1.260	32.00	.75	19.05	1.56	39.62	-	-	1500	300
WF 26	1.236	31.39	1.382	35.10	1.166	29.62	1.324	33.63	.75	19.05	1.69	42.93	-	-	1500	300
WW-15	1.237	31.42	1.382	35.10	1.167	29.64	1.288	32.72	.66	16.76	1.68	42.67	.090	2.29	2500	500
WW-16	1.312	33.32	1.465	37.21	1.249	31.72	1.364	34.65	.81	20.57	1.84	46.74	.120	3.05	1000	200
WF 27-2	1.312	33.32	1.466	37.24	1.249	31.72	1.427	36.25	.78	19.81	1.84	46.74	-	-	1000	200
WF 27	1.312	33.32	1.465	37.21	1.248	31.70	1.417	35.99	.93	23.62	1.84	46.74	-	-	1000	200
WW-16X	1.416	35.97	1.516	38.51	1.354	34.39	1.462	37.13	.69	17.53	1.75	44.45	.120	3.05	1000	200
WW-17	1.452	36.88	1.603	40.72	1.377	34.98	1.503	38.18	.63	16.00	1.94	49.28	.120	3.05	1000	200
WF-28	1.452	36.88	1.604	40.74	1.378	35.00	1.552	39.42	.75	19.05	1.94	49.28	-	-	1000	200
WW-18	1.580	40.13	1.714	43.54	1.515	38.48	1.649	41.88	.63	16.00	2.06	52.32	.120	3.05	1000	200
WW-19	1.730	43.94	1.887	47.93	1.650	41.91	1.780	45.21	.63	16.00	2.31	58.67	.120	3.05	1000	200
WF 30	1.730	43.94	1.888	47.96	1.650	41.91	1.828	46.43	.75	19.05	2.31	58.67	-	-	500	100
WF 31	1.810	45.97	1.975	50.17	1.731	43.97	1.916	48.67	.75	19.05	2.38	60.45	-	-	500	100
WW-210	1.850	46.99	2.020	51.31	1.788	45.42	1.917	48.69	1.00	25.40	2.44	61.98	.120	3.05	500	100
WF 32	1.850	46.99	2.020	51.31	1.788	45.42	1.973	50.11	1.12	28.45	2.44	61.98	-	-	500	100
1064	1.900	48.26	1.990	50.55	1.780	45.21	1.870	47.50	.57	14.48	2.34	59.44	-	-	2500	500
WW-21	1.927	48.95	2.058	52.27	1.857	47.17	1.988	50.50	.63	16.00	2.38	60.45	.120	3.05	1000	200
WF 34	2.067	52.50	2.243	56.97	2.005	50.93	2.197	55.80	1.12	28.45	2.69	68.33	-	-	250	50
WF 34-2	2.072	52.63	2.263	57.48	2.010	51.05	2.218	56.34	1.12	28.45	2.69	68.33	-	-	250	50
WW-221	2.079	52.81	2.228	56.59	2.015	51.18	2.132	54.15	.99	25.15	2.63	66.80	.120	3.05	500	100
WW-25A	2.125	53.98	2.406	61.11	2.063	52.40	2.344	59.54	1.00	25.40	2.69	68.33	.120	3.05	500	100
WF 35	2.136	54.25	2.312	58.72	2.074	52.68	2.265	57.53	1.12	28.45	2.75	69.85	-	-	250	50
WW-240	2.298	58.37	2.464	62.59	2.235	56.77	2.370	60.20	1.00	25.40	2.88	73.15	.120	3.05	500	100
WF 36	2.298	58.37	2.464	62.59	2.235	56.77	2.416	61.37	1.12	28.45	2.88	73.15	-	-	250	50
WW-33A	2.305	58.55	2.620	66.55	2.245	57.02	2.560	65.02	1.25	31.75	3.06	77.72	.120	3.05	250	50
WF-38	2.305	58.55	2.620	66.55	2.245	57.02	2.583	65.61	1.00	25.40	3.06	77.72	-	-	300	60
WW-250	2.395	60.83	2.602	66.09	2.333	59.26	2.500	63.50	1.13	28.70	3.00	76.20	.120	3.05	500	100
WF-37	2.395	60.83	2.602	66.09	2.333	59.26	2.556	64.92	1.25	31.75	3.00	76.20	-	-	250	50
WW-43A	2.475	62.87	2.725	69.22	2.405	61.09	2.650	67.31	.91	23.11	3.16	80.26	.120	3.05	250	50
WF 39	2.475	62.87	2.725	69.22	2.405	61.09	2.677	68.00	1.37	34.80	3.16	80.26	-	-	250	50
WW-44	2.638	67.01	2.759	70.08	2.568	65.23	2.661	67.59	.69	17.53	3.22	81.79	.120	3.05	500	100
WF-40	2.638	67.01	2.759	70.08	2.568	65.23	2.704	68.68	.81	20.57	3.21	81.53	-	-	250	50
WF 41	2.685	68.20	2.955	75.06	2.623	66.62	2.917	74.09	1.12	28.45	3.44	87.38	-	-	250	50
WW-55A	2.990	75.95	3.250	82.55	2.920	74.17	3.150	80.01	1.00	25.40	3.75	95.25	.120	3.05	250	50
WF-43	2.990	75.95	3.250	82.55	2.920	74.17	3.202	81.33	1.12	28.45	3.75	95.25	-	-	250	50
WW-53	2.995	76.07	3.150	80.01	2.925	74.30	3.080	78.23	.75	19.05	3.59	91.19	.120	3.05	250	50
WW-57A	3.090	78.49	3.370	85.60	3.020	76.71	3.322	84.38	1.00	25.40	3.81	96.77	.120	3.05	250	50

WW Series (Tapered Caps & Plugs with Wide, Thick Flanges) cont.

Caplug No.	Dimensions														Packaging	
	A		B		C		D		E		F		G		Carton Quantity	Mini Pak Quantity
	In	mm	In	mm	In	mm	In	mm	In	mm	In	mm	In	mm		
WW-96A	3.225	81.92	3.562	90.47	3.155	80.14	3.517	89.33	1.12	28.45	4.00	101.60	.120	3.05	250	50
WF 45	3.324	84.43	3.458	87.83	3.244	82.40	3.398	86.31	.87	22.10	3.88	98.55	-	-	200	40
WF 45-2	3.347	85.01	3.486	88.54	3.265	82.93	3.418	86.82	.87	22.10	3.91	99.31	-	-	200	40
WW-502	3.790	96.27	3.920	99.57	3.710	94.23	3.840	97.54	.75	19.05	4.34	110.24	.120	3.05	250	50
WW-1064	4.011	101.88	4.135	105.03	3.937	100.00	4.061	103.15	.75	19.05	4.62	117.35	.120	3.05	100	20
WW-1076	4.640	117.86	4.815	122.30	4.570	116.08	4.685	119.00	.88	22.35	5.17	131.32	.120	3.05	100	20
WW-1107	6.611	167.92	6.683	169.75	6.530	165.86	6.630	168.40	1.43	36.32	7.12	180.85	.120	3.05	100	20