

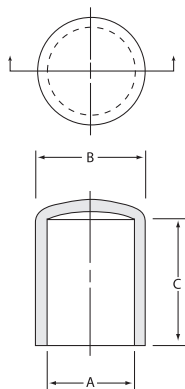
VC Series (Round Vinyl Caps)



Series VC Caps are extremely flexible and durable protective closures which are ideal for use as thread protectors, dust and moisture seals, pipe and stud end color coding, and for masking during painting or plating operations.



Material: Vinyl Standard Color: Black Optional Colors*: White, Brown, Orange, Green, Gray, Blue, Yellow, Red



Note:

- VC-054 is available in lengths up to .750"
- VC-062 is available in lengths up to 1.25"
- VC-080 through VC-125 are available in lengths up to 1.5"
- VC-140 through VC-250 are available in lengths up to 2"
- VC-281 through VC-24000 are available in lengths up to 8"
- Lengths are available in 1/16" (1.6mm) increments. Length tolerance is ±1/16" (1.6mm).

† Mini and Micro Paks available in standard color.

‡ Minimum order for Micro Paks is 2.

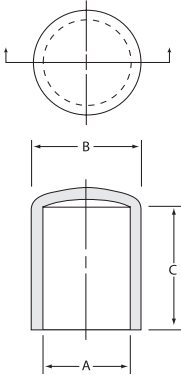
Caplug No.	Dimensions						Packaging		
	A		B		C		Carton Quantity	Mini Pak [†] Quantity	Micro Pak [‡] Quantity
	In	mm	In	mm	In	mm			
VC-054-10	.054	1.37	.09	2.29	.625	15.88	5000	1000	n/a
VC-062-10	.062	1.57	.12	3.05	.625	15.88	5000	1000	100
VC-072-10	.072	1.83	.13	3.35	.625	15.88	5000	1000	n/a
VC-080-10	.080	2.03	.14	3.56	.625	15.88	5000	1000	100
VC-093-12	.093	2.36	.15	3.81	.750	19.05	5000	1000	100
VC-109-12	.109	2.77	.18	4.57	.750	19.05	5000	1000	100
VC-125-8	.125	3.18	.20	5.08	.500	12.70	5000	1000	n/a
VC-125-16	.125	3.18	.20	5.08	1.000	25.40	5000	1000	100
VC-140-8	.140	3.56	.21	5.33	.500	12.70	5000	1000	n/a
VC-140-16	.140	3.56	.21	5.33	1.000	25.40	5000	1000	100
VC-148-8	.148	3.76	.24	6.30	.500	12.70	5000	1000	n/a
VC-148-16	.148	3.76	.24	6.30	1.000	25.40	5000	1000	n/a
VC-156-8	.156	3.96	.24	6.10	.500	12.70	5000	1000	n/a
VC-156-16	.156	3.96	.24	6.10	1.000	25.40	5000	1000	100
VC-161-8	.161	4.09	.24	6.12	.500	12.70	5000	1000	n/a
VC-161-16	.161	4.09	.24	6.12	1.000	25.39	5000	1000	n/a
VC-172-8	.172	4.37	.25	6.35	.500	12.70	5000	1000	n/a
VC-172-16	.172	4.37	.25	6.35	1.000	25.40	5000	1000	100
VC-180-8	.180	4.57	.26	6.60	.500	12.70	5000	1000	n/a
VC-180-16	.180	4.57	.26	6.60	1.000	25.40	5000	1000	n/a
VC-187-8	.187	4.75	.27	6.86	.500	12.70	5000	1000	n/a
VC-187-16	.187	4.75	.27	6.86	1.000	25.40	5000	1000	100
VC-187-24	.187	4.75	.27	6.86	1.500	38.10	4000	800	n/a
VC-203-8	.203	5.16	.29	7.37	.500	12.70	5000	1000	n/a
VC-203-16	.203	5.16	.29	7.37	1.000	25.40	5000	1000	100
VC-218-8	.218	5.54	.31	7.87	.500	12.70	5000	1000	n/a
VC-218-16	.218	5.54	.31	7.87	1.000	25.40	5000	1000	100
VC-224-8	.224	5.69	.31	7.87	.500	12.70	5000	1000	n/a
VC-224-16	.224	5.69	.31	7.87	1.000	25.40	5000	1000	n/a
VC-234-8	.234	5.94	.32	8.13	.500	12.70	5000	1000	n/a
VC-234-16	.234	5.94	.32	8.13	1.000	25.40	5000	1000	100
VC-240-8	.240	6.09	.33	8.38	.500	12.69	5000	1000	n/a
VC-240-16	.240	6.09	.33	8.38	1.000	25.38	5000	1000	n/a
VC-250-8	.250	6.35	.35	8.89	.500	12.70	5000	1000	n/a
VC-250-16	.250	6.35	.35	8.89	1.000	25.40	5000	1000	100
VC-270-10	.270	6.86	.37	9.39	.625	15.87	5000	1000	n/a
VC-281-8	.281	7.14	.38	9.65	.500	12.70	5000	1000	n/a
VC-281-16	.281	7.14	.38	9.65	1.000	25.40	5000	1000	100
VC-290-8	.290	7.37	.40	10.16	.500	12.70	5000	1000	n/a
VC-290-16	.290	7.37	.40	10.16	1.000	25.40	5000	1000	n/a
VC-304-8	.304	7.72	.41	10.41	.500	12.70	5000	1000	n/a
VC-304-16	.304	7.72	.41	10.41	1.000	25.40	4000	800	n/a
VC-312-8	.312	7.93	.42	10.67	.500	12.70	5000	1000	n/a
VC-312-16	.312	7.93	.42	10.67	1.000	25.40	5000	1000	100
VC-312-24	.312	7.93	.43	10.92	1.500	38.10	2500	500	n/a
VC-343-8	.343	8.71	.45	11.43	.500	12.70	5000	1000	n/a
VC-343-16	.343	8.71	.45	11.43	1.000	25.40	2500	500	50
VC-375-8	.375	9.53	.50	12.70	.500	12.70	5000	1000	n/a
VC-375-16	.375	9.53	.50	12.70	1.000	25.40	2500	500	50
VC-406-8	.406	10.31	.53	13.46	.500	12.70	5000	1000	n/a
VC-406-16	.406	10.31	.53	13.46	1.000	25.40	2500	500	50
VC-437-8	.437	11.10	.56	14.22	.500	12.70	5000	1000	n/a
VC-437-16	.437	11.10	.56	14.22	1.000	25.40	2500	500	50
VC-460-8	.460	11.68	.58	14.73	.500	12.70	5000	1000	n/a
VC-460-16	.460	11.68	.58	14.73	1.000	25.40	2500	500	n/a
VC-467-8	.467	11.86	.58	14.73	.500	12.70	5000	1000	n/a
VC-467-16	.467	11.86	.58	14.73	1.000	25.40	2500	500	n/a
VC-490-8	.490	12.45	.61	15.49	.500	12.70	5000	1000	n/a
VC-490-16	.490	12.45	.61	15.49	1.000	25.40	3000	600	n/a
VC-500-8	.500	12.70	.62	15.75	.500	12.70	5000	1000	n/a
VC-500-16	.500	12.70	.62	15.75	1.000	25.40	2500	500	50
VC-531-8	.531	13.49	.65	16.51	.500	12.70	5000	1000	n/a
VC-531-16	.531	13.49	.65	16.51	1.000	25.40	2500	500	n/a
VC-562-8	.562	14.28	.69	17.53	.500	12.70	2500	500	n/a

VC Series continues on next page



Several vinyl series are available in temperature-resistant Flex500.

VC Series (Round Vinyl Caps) cont.



Caplug No.	Dimensions						Packaging		
	A		B		C		Carton Quantity	Mini Pak† Quantity	Micro Pak‡ Quantity
	In	mm	In	mm	In	mm			
VC-562-16	.562	14.28	.69	17.53	1.000	25.40	2500	500	n/a
VC-600-8	.600	15.24	.73	18.54	.500	12.70	3000	600	n/a
VC-600-16	.600	15.24	.73	18.54	1.000	25.40	2000	400	n/a
VC-625-8	.625	15.88	.76	19.30	.500	12.70	2500	500	n/a
VC-625-16	.625	15.88	.76	19.30	1.000	25.40	2500	500	50
VC-625-24	.625	15.88	.77	19.56	1.500	38.10	2000	400	n/a
VC-640-8	.640	16.26	.77	19.56	.500	12.70	4000	800	n/a
VC-640-16	.640	16.26	.77	19.56	1.000	25.40	2000	400	n/a
VC-665-8	.665	16.89	.80	20.32	.500	12.70	4000	800	n/a
VC-665-16	.665	16.89	.80	20.32	1.000	25.40	2000	400	n/a
VC-687-8	.687	17.45	.81	20.57	.500	12.70	2500	500	n/a
VC-687-16	.687	17.45	.81	20.57	1.000	25.40	1000	200	n/a
VC-690-8	.690	17.53	.82	20.83	.500	12.70	2500	500	n/a
VC-690-16	.690	17.53	.82	20.83	1.000	25.40	1000	200	n/a
VC-725-8	.725	18.42	.86	21.84	.500	12.70	2500	500	n/a
VC-725-16	.725	18.42	.86	21.84	1.000	25.40	1000	200	n/a
VC-750-8	.750	19.05	.88	22.35	.500	12.70	2500	500	n/a
VC-750-16	.750	19.05	.88	22.35	1.000	25.40	1000	200	25
VC-812-8	.812	20.63	.94	23.88	.500	12.70	2500	500	n/a
VC-812-16	.812	20.63	.94	23.88	1.000	25.40	1000	200	n/a
VC-812-24	.812	20.63	.95	24.13	1.500	38.10	1000	200	n/a
VC-825-8	.825	20.95	.96	24.50	.500	12.70	2500	500	n/a
VC-825-16	.825	20.95	.96	24.50	1.000	25.39	1000	200	n/a
VC-843-8	.843	21.41	.98	24.89	.500	12.70	2500	500	n/a
VC-843-16	.843	21.41	.98	24.89	1.000	25.40	1000	200	n/a
VC-870-8	.870	22.10	1.01	25.65	.500	12.70	1000	200	n/a
VC-870-16	.870	22.10	1.01	25.65	1.000	25.40	1000	200	n/a
VC-875-8	.875	22.23	1.02	25.91	.500	12.70	2500	500	n/a
VC-875-16	.875	22.23	1.02	25.91	1.000	25.40	1000	200	25
VC-875-24	.875	22.23	1.02	25.91	1.500	38.10	1000	200	n/a
VC-937-8	.937	23.80	1.08	27.43	.500	12.70	2500	500	n/a
VC-937-16	.937	23.80	1.08	27.43	1.000	25.40	1000	200	n/a
VC-985-8	.985	25.02	1.13	28.70	.500	12.70	2000	400	n/a
VC-985-16	.985	25.02	1.13	28.70	1.000	25.40	1000	200	n/a
VC-1000-8	1.000	25.40	1.14	28.96	.500	12.70	1000	200	n/a
VC-1000-16	1.000	25.40	1.14	28.96	1.000	25.40	1000	200	25
VC-1000-24	1.000	25.40	1.14	28.96	1.500	38.10	1000	200	n/a
VC-1062-16	1.062	26.97	1.20	30.48	1.000	25.40	1200	240	n/a
VC-1090-16	1.090	27.69	1.22	30.99	1.000	25.40	1200	240	n/a
VC-1125-16	1.125	28.57	1.27	32.26	1.000	25.40	1200	240	n/a
VC-1187-16	1.187	30.14	1.33	33.78	1.000	25.40	1000	200	n/a
VC-1250-16	1.250	31.75	1.39	35.31	1.000	25.40	1000	200	25
VC-1250-24	1.250	31.75	1.39	35.31	1.500	38.10	500	100	n/a
VC-1312-16	1.312	33.32	1.45	36.83	1.000	25.40	800	160	n/a
VC-1312-24	1.312	33.32	1.45	36.83	1.500	38.10	600	120	n/a
VC-1375-16	1.375	34.92	1.52	38.61	1.000	25.40	800	160	n/a
VC-1375-24	1.375	34.92	1.52	38.61	1.500	38.10	400	80	n/a
VC-1437-16	1.437	36.50	1.58	40.06	1.000	25.40	750	150	n/a
VC-1500-16	1.500	38.10	1.64	41.66	1.000	25.40	750	150	25
VC-1500-24	1.500	38.10	1.64	41.66	1.500	38.10	300	60	n/a
VC-1593-16	1.593	40.46	1.72	43.76	1.000	25.40	750	150	n/a
VC-1625-16	1.625	41.27	1.77	44.96	1.000	25.40	750	150	n/a
VC-1687-16	1.687	42.84	1.83	46.48	1.000	25.40	700	140	n/a
VC-1750-16	1.750	44.45	1.89	48.01	1.000	25.40	700	140	n/a
VC-1812-16	1.812	46.02	1.95	49.58	1.000	25.40	1000	200	n/a
VC-1875-16	1.875	47.62	2.02	51.31	1.000	25.40	600	120	n/a
VC-1937-16	1.937	49.20	2.07	52.76	1.000	25.40	600	120	n/a
VC-2000-16	2.000	50.80	2.14	54.36	1.000	25.40	600	120	20
VC-2000-24	2.000	50.80	2.14	54.36	1.500	38.10	300	60	n/a
VC-2125-16	2.125	53.98	2.27	57.79	1.000	25.40	500	100	n/a
VC-2156-16	2.156	54.76	2.30	58.57	1.000	25.40	500	100	n/a
VC-2250-16	2.250	57.15	2.40	60.96	1.000	25.40	500	100	n/a
VC-2250-24	2.250	57.15	2.40	60.96	1.500	38.10	300	60	n/a
VC-2375-16	2.375	60.33	2.52	64.14	1.000	25.40	400	80	n/a
VC-2375-24	2.375	60.33	2.52	64.14	1.500	38.10	300	60	n/a
VC-2460-16	2.460	62.48	2.61	66.29	1.000	25.40	400	80	n/a
VC-2500-16	2.500	63.50	2.65	67.31	1.000	25.40	400	80	n/a
VC-2500-24	2.500	63.50	2.65	67.31	1.500	38.10	250	50	n/a
VC-2625-16	2.625	66.67	2.77	70.49	1.000	25.40	400	80	n/a
VC-2625-24	2.625	66.67	2.77	70.49	1.500	38.10	200	40	n/a
VC-2687-16	2.687	68.25	2.84	72.31	1.000	25.40	400	80	n/a
VC-2750-16	2.750	69.85	2.91	73.91	1.000	25.40	300	60	n/a
VC-2750-24	2.750	69.85	2.91	73.91	1.500	38.10	200	40	n/a
VC-2875-16	2.875	73.03	3.03	77.09	1.000	25.40	250	50	n/a
VC-3000-16	3.000	76.20	3.16	80.26	1.000	25.40	250	50	n/a

† Mini and Micro Paks available in standard color.

‡ Minimum order for Micro Paks is 2.

VC Series (Round Vinyl Caps) cont.

Caplug No.	Dimensions						Packaging		
	A		B		C		Carton Quantity	Mini Pak† Quantity	Micro Pak‡ Quantity
	In	mm	In	mm	In	mm			
VC-3000-24	3.000	76.20	3.16	80.26	1.500	38.10	250	50	n/a
VC-3125-16	3.125	79.37	3.28	83.44	1.125	28.58	250	n/a	n/a
VC-3125-24	3.125	79.37	3.28	83.44	1.500	38.10	300	n/a	n/a
VC-3250-18	3.250	82.55	3.41	86.61	1.125	28.58	200	n/a	n/a
VC-3375-18	3.375	85.73	3.53	89.79	1.125	28.58	250	n/a	n/a
VC-3500-18	3.500	88.90	3.66	92.96	1.125	28.58	225	n/a	n/a
VC-3500-24	3.500	88.90	3.66	92.96	1.500	38.10	200	n/a	n/a
VC-3625-18	3.625	92.08	3.78	96.14	1.125	28.58	200	n/a	n/a
VC-3750-18	3.750	92.25	3.91	99.31	1.125	28.58	200	n/a	n/a
VC-3875-18	3.875	98.43	4.03	102.49	1.125	28.58	200	n/a	n/a
VC-4000-20	4.000	101.60	4.16	105.66	1.250	31.75	100	n/a	n/a
VC-4125-20	4.125	104.78	4.28	108.84	1.250	31.75	150	n/a	n/a
VC-4187-20	4.187	106.35	4.34	110.41	1.250	31.75	100	n/a	n/a
VC-4250-20	4.250	107.95	4.41	112.01	1.250	31.75	150	n/a	n/a
VC-4375-20	4.375	111.13	4.53	115.19	1.250	31.75	150	n/a	n/a
VC-4500-20	4.500	114.30	4.66	118.36	1.250	31.75	150	n/a	n/a
VC-4750-20	4.750	120.65	4.91	124.71	1.250	31.75	100	n/a	n/a
VC-5000-22	5.000	127.00	5.18	131.57	1.375	34.93	125	n/a	n/a
VC-5187-22	5.187	131.75	5.36	136.32	1.375	34.93	125	n/a	n/a
VC-5375-22	5.375	136.53	5.55	141.10	1.375	34.93	100	n/a	n/a
VC-5500-22	5.500	139.70	5.68	144.27	1.375	34.93	100	n/a	n/a
VC-5750-22	5.750	146.05	5.93	150.62	1.375	34.93	50	n/a	n/a
VC-6000-24	6.000	152.40	6.18	156.97	1.500	38.10	90	n/a	n/a
VC-6250-24	6.250	158.75	6.43	163.32	1.500	38.10	90	n/a	n/a
VC-6500-24	6.500	165.10	6.68	169.67	1.500	38.10	80	n/a	n/a
VC-6750-24	6.750	171.45	6.93	176.02	1.500	38.10	70	n/a	n/a
VC-7000-24	7.000	177.80	7.18	182.37	1.500	38.10	50	n/a	n/a
VC-7250-24	7.250	184.15	7.43	188.72	1.500	38.10	70	n/a	n/a
VC-7500-24	7.500	190.50	7.68	195.07	1.500	38.10	50	n/a	n/a
VC-7750-28	7.750	196.85	7.93	201.42	1.750	44.45	50	n/a	n/a
VC-8000-28	8.000	203.20	8.18	207.77	1.750	44.45	50	n/a	n/a
VC-8500-28	8.500	215.90	8.68	220.47	1.750	44.45	50	n/a	n/a
VC-8750-28	8.750	222.25	8.93	226.82	1.750	44.45	50	n/a	n/a
VC-9000-28	9.000	228.60	9.20	233.68	1.750	44.45	50	n/a	n/a
VC-9250-28	9.250	234.95	9.45	240.03	1.750	44.45	40	n/a	n/a
VC-9375-28	9.375	238.13	9.57	243.21	1.750	44.45	40	n/a	n/a
VC-9500-28	9.500	241.30	9.70	246.38	1.750	44.45	40	n/a	n/a
VC-9625-28	9.625	244.48	9.82	249.56	1.750	44.45	40	n/a	n/a
VC-9875-28	9.875	250.83	10.07	255.91	1.750	44.45	40	n/a	n/a
VC-10000-32	10.000	254.00	10.20	259.08	2.000	50.80	35	n/a	n/a
VC-10312-32	10.312	261.92	10.51	267.00	2.000	50.80	25	n/a	n/a
VC-10750-32	10.750	273.05	10.95	278.13	2.000	50.80	25	n/a	n/a
VC-11000-32	11.000	279.40	11.20	284.48	2.000	50.80	25	n/a	n/a
VC-11375-32	11.375	288.93	11.57	294.01	2.000	50.80	25	n/a	n/a
VC-11750-32	11.750	298.45	11.95	303.53	2.000	50.80	25	n/a	n/a
VC-12000-32	12.000	304.80	12.20	309.88	2.000	50.80	25	n/a	n/a
VC-12250-32	12.250	311.15	12.45	316.23	2.000	50.80	25	n/a	n/a
VC-12500-32	12.500	317.50	12.70	322.58	2.000	50.80	25	n/a	n/a
VC-12625-32	12.625	320.68	12.82	325.76	2.000	50.80	25	n/a	n/a
VC-12875-32	12.875	327.03	13.07	332.11	2.000	50.80	25	n/a	n/a
VC-13250-32	13.250	336.55	13.47	342.14	2.000	50.80	25	n/a	n/a
VC-13500-32	13.500	342.90	13.72	348.49	2.000	50.80	25	n/a	n/a
VC-13600-32	13.600	345.44	13.82	351.03	2.000	50.80	25	n/a	n/a
VC-14000-32	14.000	355.60	14.22	361.19	2.000	50.80	18	n/a	n/a
VC-14250-32	14.250	361.95	14.47	367.54	2.000	50.80	25	n/a	n/a
VC-14500-32	14.500	368.30	14.72	373.89	2.000	50.80	25	n/a	n/a
VC-15000-32	15.000	381.00	15.22	386.59	2.000	50.80	25	n/a	n/a
VC-15625-32	15.625	396.88	15.84	402.46	2.000	50.80	25	n/a	n/a
VC-15875-32	15.875	403.23	16.11	409.32	2.000	50.80	25	n/a	n/a
VC-16000-32	16.000	406.40	16.24	412.50	2.000	50.80	20	n/a	n/a
VC-16500-32	16.500	419.10	16.74	425.20	2.000	50.80	25	n/a	n/a
VC-17375-40	17.375	441.33	17.61	447.42	2.500	63.50	25	n/a	n/a
VC-18000-40	18.000	457.20	18.24	463.30	2.500	63.50	15	n/a	n/a
VC-19000-40	19.000	482.60	19.24	488.70	2.500	63.50	15	n/a	n/a
VC-20000-40	20.000	508.00	20.24	514.10	2.500	63.50	15	n/a	n/a
VC-21000-40	21.000	533.40	21.24	539.50	2.500	63.50	15	n/a	n/a
VC-24000-48	24.000	609.60	24.24	615.70	3.000	76.20	20	n/a	n/a

† Mini and Micro Paks available in standard color.

‡ Minimum order for Micro Paks is 2.



Several vinyl series are available in temperature-resistant Flex500.

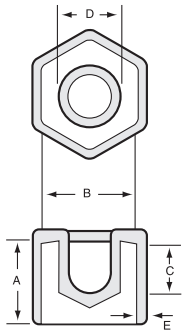
AN Series (Vinyl Hex Caps)



Designed for AN-style fittings, Series AN Caps are easy to install and remove. Engineered with aerospace quality, these caps are available in all common hydraulic nut sizes. No tools are required to install Series AN Caps.



Material: Vinyl **Color:** Yellow
Optional Colors*: White, Black, Brown, Orange, Red, Green, Gray, Blue



Caplug No.	Dimensions										Packaging	
	A		B		C		D		E		Carton Quantity	Mini Pak Quantity
	In	mm	In	mm	In	mm	In	mm	In	mm		
AN-2	.550	13.97	.375	9.53	.250	6.35	.203	5.16	.055	1.40	5000	1000
AN-3	.625	15.88	.440	11.18	.370	9.40	.203	5.16	.060	1.52	5000	1000
AN-4	.645	16.38	.560	14.22	.435	11.05	.250	6.35	.060	1.52	5000	1000
AN-5	.690	17.53	.625	15.88	.475	12.07	.315	8.00	.060	1.52	5000	1000
AN-6	.725	18.42	.685	17.40	.500	12.70	.375	9.53	.065	1.65	2500	500
AN-8	.875	22.23	.875	22.23	.563	14.30	.515	13.08	.065	1.65	2500	500
AN-10	1.000	25.40	1.000	25.40	.700	17.78	.780	19.81	.065	1.65	1250	250
AN-12	1.000	25.40	1.250	31.75	.700	17.78	.780	19.81	.065	1.65	500	100
AN-14	1.100	27.94	1.375	34.93	.700	17.78	.880	22.35	.065	1.65	1000	200
AN-16	1.100	27.94	1.500	38.10	.750	19.05	1.000	25.40	.065	1.65	1000	200
AN-20	1.250	31.75	1.815	46.10	.950	24.13	1.219	30.96	.065	1.65	500	100
AN-24	1.500	38.10	2.250	57.15	-	-	-	-	.075	1.91	400	80
AN-28	1.500	38.10	2.625	66.68	-	-	-	-	.075	1.91	200	40

VFE Series (Vinyl Caps with Flat Ergonomic Pull-Tab)

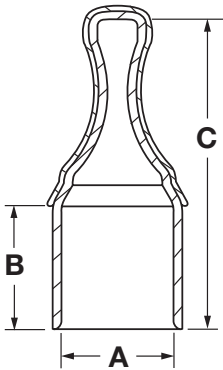


Series VFE Caps feature a long, flat ergonomic pull-tab, which allows for easy removal. The ergonomic design offers an easier gripping surface and requires less pull for removal.

Expanded!



Material: Vinyl **Colors:** Black and Red **Optional Colors*:** White, Brown, Orange, Green, Gray, Blue, Yellow



Caplug No.	Dimensions						Packaging	
	A		B		C		Carton Quantity	Mini Pak Quantity
	In	mm	In	mm	In	mm		
VFE-312-8	.312	7.92	.500	12.70	1.245	31.62	5000	1000
VFE-320-10	.320	8.13	.625	15.88	1.325	33.66	8000	1000
VFE-375-8	.375	9.53	.500	12.70	1.425	36.20	5000	1000
VFE-406-8	.406	10.31	.500	12.70	1.150	29.21	5000	1000
VFE-420-10	.420	10.67	.625	15.88	1.365	34.67	5000	1000
VFE-437-8	.437	11.10	.500	12.70	1.255	31.88	5000	1000
VFE-450-6	.450	11.43	.375	9.53	1.275	32.39	8000	1000
VFE-470-8	.470	11.94	.500	12.70	1.280	32.51	5000	1000
VFE-500-8	.500	12.70	.500	12.70	1.425	36.20	5000	1000
VFE-530-10	.530	13.46	.625	15.88	1.125	28.58	4000	800
VFE-595-10	.595	15.11	.625	15.88	1.525	38.73	2500	500
VFE-717-16	.717	18.21	.625	15.88	2.130	54.10	2000	400
VFE-750-12	.750	19.05	.750	19.05	1.635	41.53	3000	600
VFE-950-14	.950	24.13	.625	15.88	2.140	54.36	1250	250
VFE-1000-10	1.000	25.40	.625	15.88	1.600	40.64	2500	500
VFE-1125-12	1.125	28.58	.750	19.05	1.775	45.09	2000	400

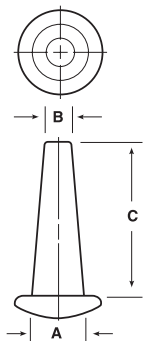
TP Series (Tapered Vinyl Plugs)



Series TP Vinyl Plugs are designed with a distinct tapered configuration, making them ideal for plugging small holes ranging in diameter from .070" to .343". Flexibility of the vinyl allows these plugs to push in and pull out easily. They are color-coded for ease of size identification.



Material: Vinyl Color: See chart



Caplug No.	Color	Dimensions						Packaging		
		A		B		C		Carton Quantity	Mini Pak [†] Quantity	Micro Pak [‡] Quantity
		In	mm	In	mm	In	mm			
TP-4	Red	.15	3.81	.07	1.78	.625	15.88	5000	1000	50
TP-6	Blue	.20	5.08	.10	2.54	.500	12.70	5000	1000	50
TP-8	Green	.25	6.35	.14	3.56	.750	19.05	5000	1000	50
TP-9	Brown	.30	7.62	.14	3.56	1.000	25.40	5000	1000	50
TP-10	Orange	.31	7.87	.16	4.06	.750	19.05	5000	1000	50
TP-11	Gray	.31	7.87	.19	4.83	1.000	25.40	5000	1000	50
TP-12	Red	.34	8.64	.19	4.83	.750	19.05	5000	1000	50

† Mini and Micro Paks available in standard color.
‡ Minimum order for Micro Paks is 2.

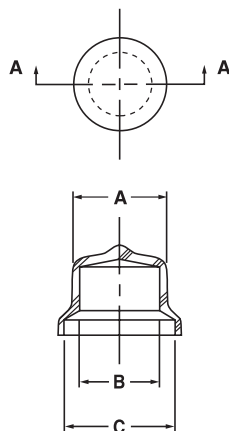
VTP Series (Flexible Vinyl Tapered Plugs)



Series VTP Vinyl Plugs provide a snug fit when pushed into open ports, ensuring a tight closure that will not pop out accidentally during processing or shipping. A simple tug on the flanged lip of an installed VTP breaks the seal for easy removal. The plugs are molded from a specially formulated, non-shredding vinyl that offers an attractive, high-gloss finish to products.



Material: Vinyl Color*: Red Optional Colors: White, Brown, Orange, Green, Gray, Blue, Yellow



Caplug No.	To Fit Thread Size		Dimensions						Packaging		
	NPT	STD	A		B		C		Carton Quantity	Mini Pak [†] Quantity	Micro Pak [‡] Quantity
			In	mm	In	mm	In	mm			
VTP-05	-	1/4	.195	4.95	.125	3.18	.300	7.62	5000	1000	100
VTP-1	-	5/16	.290	7.37	.210	5.33	.406	10.31	5000	1000	100
VTP-2	1/8	3/8	.400	10.16	.290	7.37	.437	11.10	5000	1000	100
VTP-25	-	7/16	.445	11.30	.340	8.64	.500	12.70	5000	1000	100
VTP-3	1/4	1/2	.530	13.46	.365	9.27	.555	14.10	5000	1000	100
VTP-35	-	9/16	.570	14.48	.445	11.30	.625	15.88	2500	500	50
VTP-4	3/8	5/8	.640	16.26	.520	13.21	.750	19.05	2500	500	50
VTP-5	1/2	3/4	.800	20.32	.682	17.32	.937	23.80	2500	500	50
VTP-55	3/4	7/8	.870	22.10	.732	18.59	1.000	25.40	1000	200	25
VTP-6	3/4	1-1/16	1.025	26.04	.891	22.63	1.188	30.18	1000	200	25
VTP-7	1	1-3/16, 1-1/4, 1-5/16	1.275	32.39	1.147	29.13	1.453	36.91	1000	200	25

† Mini and Micro Paks available in standard color.
‡ Minimum order for Micro Paks is 2 Paks.

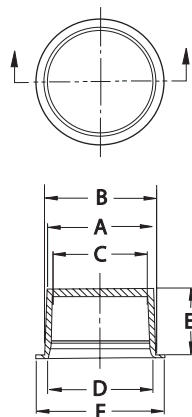
TV Series (Flexible Vinyl Tapered Caps & Plugs)



The TV Series feature an injection-molded vinyl tapered design that can be used as a cap or a plug. Using an A-80 Shore durometer (hardness) vinyl, these caps resist tearing, cracking, splitting and shredding. Highly flexible, they enable snug fits even with smaller dimensions and irregular shapes; they are also easy to remove.



Material: Vinyl (80 Durometer) Color*: Red



Caplug No.	Dimensions												Packaging	
	A		B		C		D		E		F		Carton Quantity	Mini Pak Quantity
	In	mm	In	mm	In	mm	In	mm	In	mm	In	mm		
TV-1	.234	5.94	.270	6.86	.180	4.57	.198	5.03	.319	8.10	.39	9.91	10000	1000
TV-2	.300	7.62	.363	9.22	.218	5.54	.295	7.49	.345	8.76	.50	12.70	7000	1000
TV-3	.348	8.84	.386	9.80	.260	6.60	.304	7.72	.339	8.61	.50	12.70	7500	1000
TV-4	.381	9.68	.436	11.07	.304	7.72	.374	9.50	.350	8.89	.56	14.22	10000	1000
TV-4A	.404	10.26	.463	11.76	.338	8.59	.392	9.96	.409	10.39	.59	14.99	10000	1000
TV-4B	.468	11.89	.505	12.83	.396	10.06	.434	11.02	.469	11.91	.61	15.49	7000	1000
TV-5	.433	11.00	.498	12.65	.365	9.27	.441	11.20	.405	10.29	.67	17.02	7500	1000
TV-6	.496	12.60	.556	14.12	.434	11.02	.494	12.55	.425	10.80	.72	18.29	6000	1000
TV-6A	.570	14.48	.619	15.72	.497	12.62	.546	13.87	.467	11.86	.81	20.57	1700	340
TV-7	.577	14.66	.636	16.15	.506	12.85	.570	14.48	.495	12.57	.79	20.07	6000	1000
TV-248	.628	15.95	.775	19.69	.570	14.48	.697	17.70	.710	18.03	.90	22.86	3750	750
TV-8†	.686	17.42	.754	19.15	.624	15.85	.680	17.27	.588	14.94	.96	24.38	4500	900
TV-8P	.670	17.02	.735	18.67	.592	15.04	.671	17.04	.464	11.79	.98	24.89	6000	1000
TV-8J	.737	18.72	.771	19.58	.653	16.59	.711	18.06	.485	12.32	.99	25.15	6000	1000
TV-9†	.760	19.30	.818	20.78	.620	15.75	.678	17.22	.630	16.00	.96	24.38	3500	700
TV-10†	.813	20.65	.884	22.45	.745	18.92	.837	21.26	.498	12.65	1.20	30.48	3500	700
TV-11	.842	21.39	.895	22.73	.772	19.61	.850	21.59	.608	15.44	1.07	27.18	6000	1000
TV-11A	.935	23.75	.980	24.89	.775	19.69	.820	20.83	.570	14.48	1.24	31.50	4000	800
TV-11P	.847	21.51	.931	23.65	.764	19.41	.851	21.62	.641	16.28	1.08	27.43	4000	800
TV-12	.993	25.22	1.106	28.09	.925	23.50	1.044	26.52	.745	18.92	1.37	34.80	2500	500
TV-12P	.880	22.35	.950	24.13	.720	18.29	.790	20.07	.650	16.51	1.16	29.46	4000	800
TV-13†	1.031	26.19	1.164	29.57	.950	24.13	1.090	27.69	.760	19.30	1.30	33.02	2250	450
TV-14	1.121	28.47	1.183	30.05	1.040	26.42	1.128	28.65	.745	18.92	1.46	37.08	2000	400
TV-14A†	1.182	30.02	1.303	33.10	1.042	26.47	1.163	29.54	.760	19.30	1.51	38.35	2500	500
TV-15	1.346	34.19	1.425	36.20	1.196	30.38	1.275	32.39	.880	22.35	1.63	41.40	1200	240
TV-16	1.301	33.05	1.367	34.72	1.221	31.01	1.291	32.79	.710	18.03	1.58	40.13	1500	300
TV-16A	1.324	33.63	1.460	37.08	1.184	30.07	1.320	33.53	.940	23.88	1.68	42.67	1500	300
TV-19	1.512	38.40	1.586	40.28	1.362	34.59	1.436	36.47	.750	19.05	1.87	47.50	1500	300
TV-19A	1.773	45.03	1.871	47.52	1.667	42.34	1.774	45.06	.625	15.88	2.10	53.34	1200	240
TV-20	1.625	41.28	1.703	43.26	1.514	38.46	1.615	41.02	.700	17.78	1.85	46.99	1500	300
TV-20A	1.833	46.56	1.947	49.45	1.760	44.70	1.852	47.04	1.000	25.40	2.17	55.12	1500	300
TV-21H	1.906	48.41	2.054	52.17	1.790	45.47	1.923	48.84	1.050	26.67	2.47	62.74	850	170

†Part has a side pull-tab on flange